



EXCAVATOR

PARTS BOOK



FOREWORD

This parts list is shown the equipment components parts of EXCAVATOR XN28.

1.HOW TO ORDER PARTS

When ordering parts , please specify the following items as shown in the following example.

- EX. 1) Model of machine : XN28 (Shown on name plate on the side cover)
- 2)Engine Serial No : Yanmar 3TNV80F-SPSY2 (Shown on Engine cylinder block)
- 3)Part No. : 1.11
- 4)Part Name : Revolving joint
- 5)Q'TY : 1

2.HOW TO USE THIS PARTS LIST.

- Item : It shows the part number of the parts which are included in an parts drawing.
- Part No. : It is made up of several numbers and letters. It is the code used when ordering that part , and very important that there be no mistake in this code number when ordering.
- Part Name : It shows the name of part. Some of the part name contains technical specifications.
- Q'TY : It shows the numbers of the part in this drawing. If one part is included in the assembly and/or component , the quantity per such assembly and/or component is specified.
- REMARK : Description

CONTENTS

MACHINE BODY 整机

1.0 LOWER FRAME 下车架

1.4 行走马达 Travel motor

1.4.1 驱动马达 Track drive

1.4.2 减速机 Track reducer

1.18 回转接头 Swivel joint

2.0 MAIN FRAME ASSY 上车架

2.21 主阀总成 Main Valve Assembly

2.28 回转马达 Rotary motor

2.37 液压油箱总成 Hydraulic tank assembly

2.55 柴油箱总成 Diesel fuel tank assembly

2.70 驾驶室总成 Cabin assembly

2.71 发动机总成 Engine assembly

2.71.1 发动机 The engine

2.71.1.1 气缸体 CYLINDER BLOCK

2.71.1.2 齿轮箱 GEAR HOUDING

2.71.1.3 飞轮壳和油底壳 FLYWHEEL HOUSING & OIL SUMP

2.71.1.4 气缸盖和阀盖 CYLINDER HEAD & BONNET

2.71.1.5 排气歧管 EXHAUST MANIFOLD

2.71.1.6 凸轮轴和传动齿轮 CAMSHAFT & DRIVING GEAR

2.71.1.7 曲轴和活塞 CRANKSHAFT & PISTON

2.71.1.8 润滑系统 LUB.OIL SYSTEM

2.71.1.9 冷却水系统 COOLING WATER SYSTEM

2.71.1.10 燃油泵 FUEL INJECTION PUMP

2.71.1.11 调速器 GOVERNOR

2.71.1.12 喷油阀 FUEL INJECTION VALVE

2.71.1.13 燃油管 FUEL PIPE

2.71.1.14 启动马达 STARTER MOTOR

2.71.1.15 发电机 GENERATOR

2.71.1.16 附件 ACCESSORY

2.71.1.17 垫片组 GASKET SET

2.71.5 主泵总成 The main pump

3.0 FRONT ASSY 前部装置

3.1 动臂总成 Lift arm ASSY

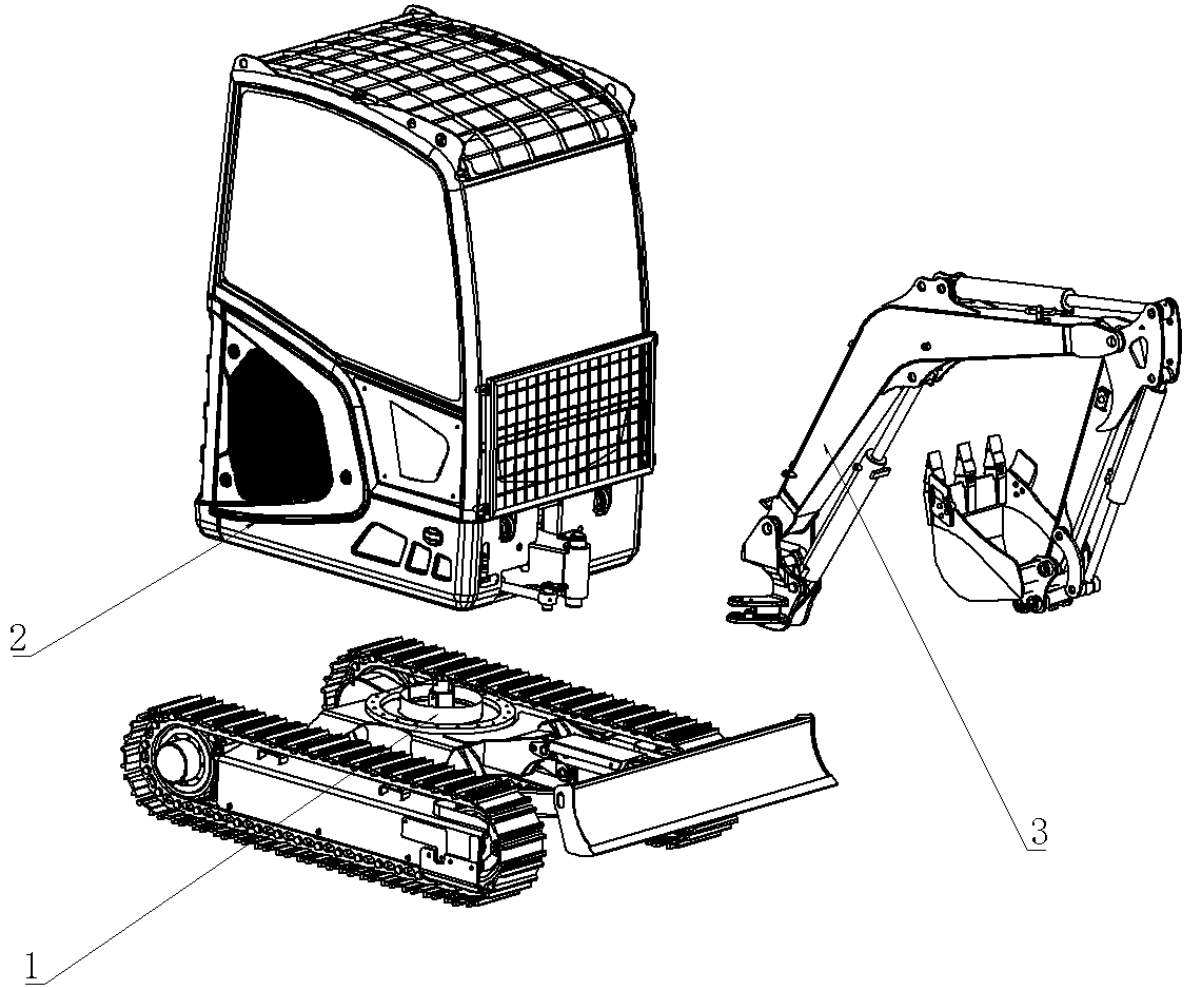
3.2 斗杆总成 Bucket rod ASSY

3.6 推杆总成 Pushing rod ASSY

MACHINE BODY 整机

序号 ITEM	零件号 PART NO.	Part Name	零件名称	数量 Q'TY	备注 Remark
1	1.0	Lower frame	下车架	1	
2	2.0	Main frame assy	上车架	1	
3	3.0	Front assy	前部装置	1	

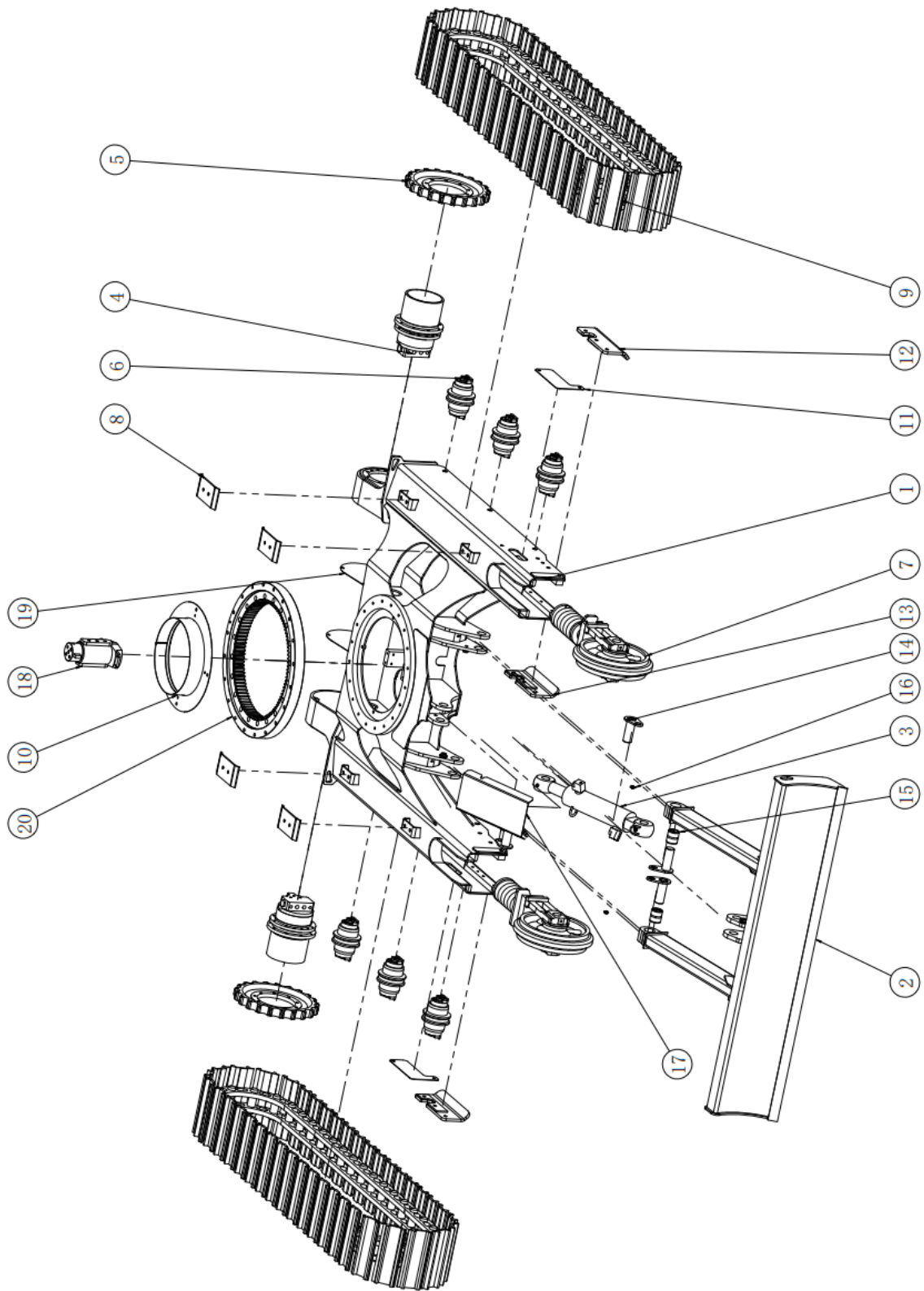
MACHINE BODY 整机



1.0 LOWER FRAME 下车架

序号 ITEM	零件号 PART NO.	Part Name	零件名称	数量 Q'TY	备注 Remark
1	1.1	Main welding body	下车架焊合	1	
2	1.2	Dozer blade	推土铲	1	
3	1.3	Dozer blade cylinder	推土铲油缸	1	
4	1.4	Travel motor	行走马达	2	
5	1.5	Driving wheel	驱动轮	2	
6	1.6	Track roller	支重轮	6	
7	1.7	Guide wheel	导向轮	2	
8	1.8	Track plates	拖链板	4	
9	1.9	Track Assy	履带总成	2	
10	1.10	Slewing support guard	圆筒	1	
11	1.11	Cover plate	盖板	2	
12	1.12	Chain protective plate A	护链板 A	2	
13	1.13	Chain protective plate B	护链板 B	2	
14	1.14	Dozer blade shaft	前铲轴	4	
15	1.15	Steel bushing	钢套	2	
16	1.16	Oil cup	M10x1 油杯	2	
17	1.17	Protective cover	防护罩	1	
18	1.18	Swivel joint	回转接头	1	
19	1.19	The motor cover plate	马达盖板	2	
20	1.20	Rotary support	回转支撑	1	

1.0 LOWER FRAME 下车架

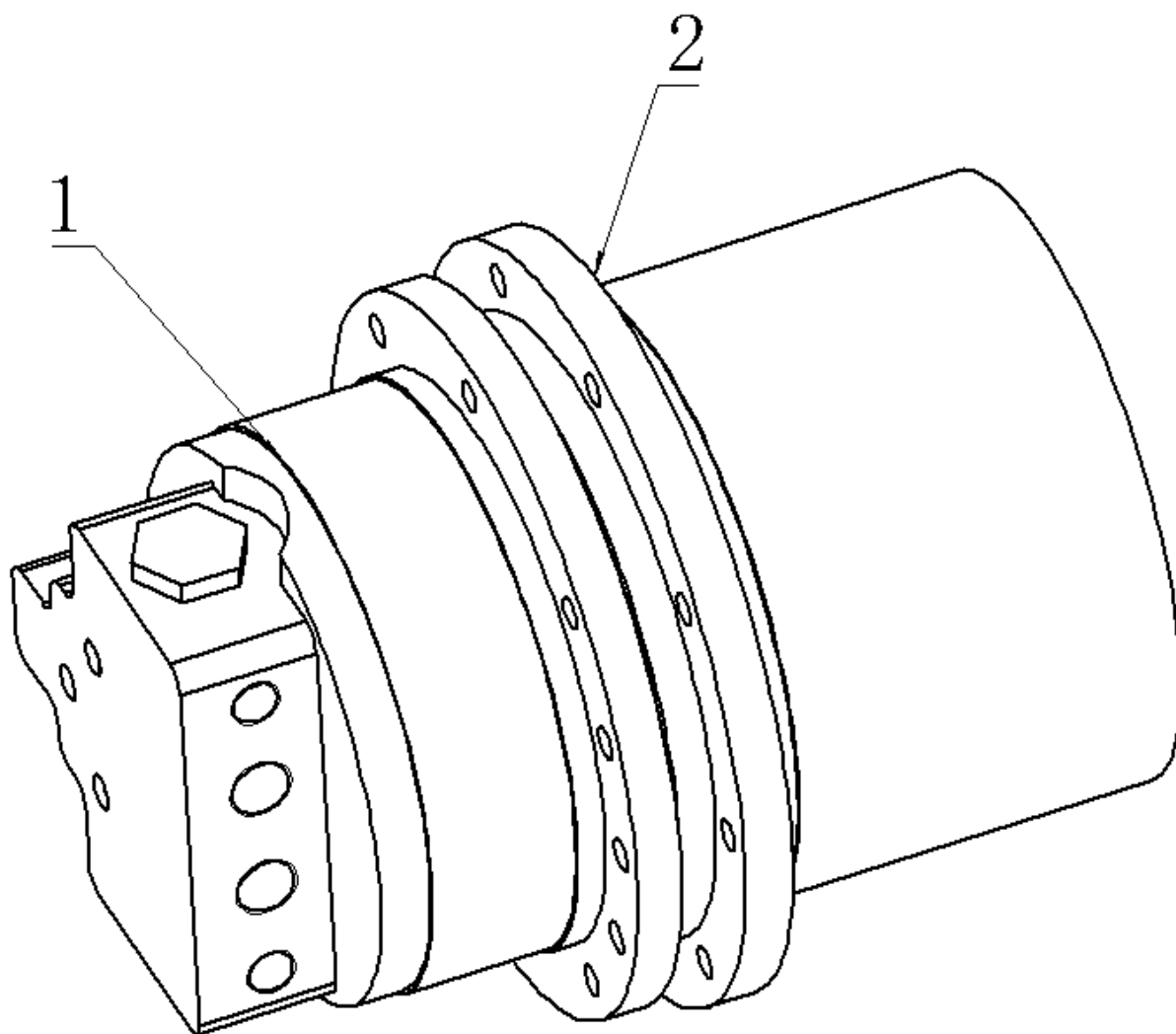


1.4 Travel motor 行走马达

序号 ITEM	零件号 PART NO.	Part Name	零件名称	数量 Q'TY	备注 Remark
------------	-----------------	-----------	------	------------	--------------

1	1.0	Drive motor	驱动马达	1
2	2.0	Reducer	减速机	1

1.4 Travel motor 行走马达

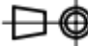


1.4.1 Track drive 驱动马达

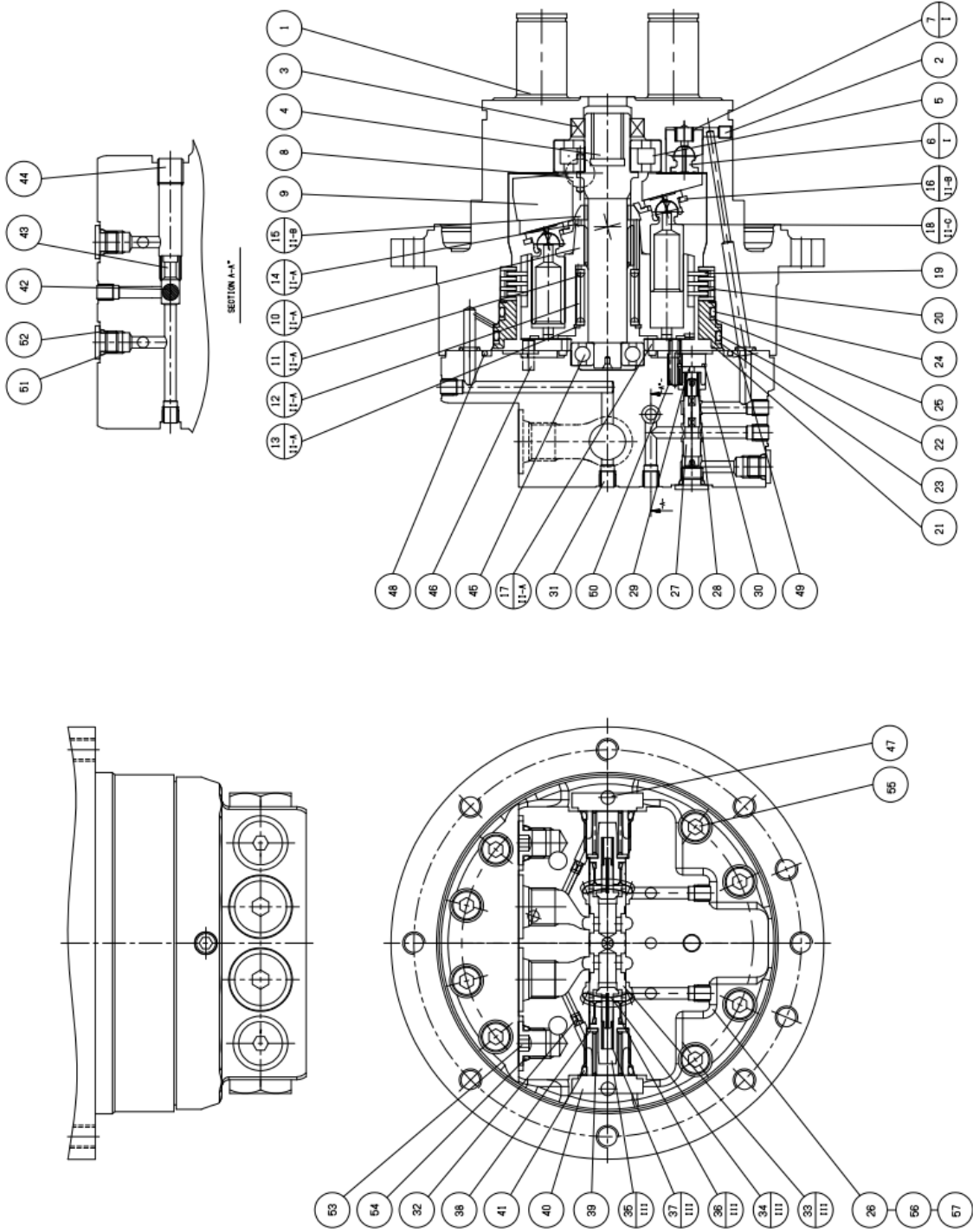
번호 NO.	품명 PART NAME	품번 PART NUMBER	도번 DWS. NUMBER	재질 MATERIAL	수량 Q'TY	비고 REMARK	KIT NO.	RSP
58	PLASTIC PLUG		PP38		2			A
57	RIVET		RV175		2	φ1.7x5L		A
56	NAME PLATE		JB6G7010		1			B
55	WRENCH BOLT	40050112301	WBM0825		8			A
54	O-RING	40070005401	RNP90110	NBR	2			A
53	PLUG	31040269401	JA5H4024	S45C	2	PF1/4"		B
52	O-RING	40070079801	RNP90080	NBR	4			A
51	PLUG	30040213901	MS50S208-3	S45C	4	PF1/8"		B
50	SPRING	41520125301	JA5H4025	PW	10			B
49	O-RING	40070018901	RNP90060	NBR	2			A
48	O-RING	40070020201	RNG91050	NBR	1			A
47	PIN	41590225201	P10000P3	S45C	2	φ6x14L		A
46	SPRING PIN	41520125201	SP0512		1	φ5x12L		A
45	BEARING	41570209401	BB6201		1	#6201		A
44	PLUG	40990012301	WPT14	S45C	1	PT1/4"		B
43	CHECK SEAT	31040275201 2100022201	JA0J3031	SCM440	1			B
42	STEEL BALL	41570217301	SB932		1	φ7.144		A
41	O-RING	40070125101	RNA91150	NBR	2			A
40	PLUG	31040269301	JA5H4022	S45C	2			B
39	SPRING	41520125001	JA5H4021	PW	2			B
38	SEAT	31040269201	JA5H4020	S45C	2			B
III-A-37	SPRING		JA5H4019	PW	2			B
III-A-36	O-RING		RNP90100	NBR	2			A
III-A-35	PLUG		JA5H4018	S45C	2			B
III-A-34	CHECK		JA5H4017	SCM440	2			B
III-A-33	MAIN SPOOL		JA5H4016	S45C	1			B
III	MAIN SPOOL ASS'Y	31040505401	JA5H4053					C
32	ORIFICE	40050098201	JA1L4018	SCM440	2			B
31	PLUG	40990000301	NPT116	S45C	7	NPT 1/16"		A
30	SNAP RING	40100123101	IRTWSR12CH		1	IRTW-12		A
29	STOPPER	31040270801	JB4R7009	S45C	1			B
28	SPRING	41520105101	JB4R7008	PW	1			B
27	SPOOL	31040270701	JB4R7007	SCM415	1			B
26	VALVE CASING	21100562001	JB4R7006	FCD50	1			B
25	BACK UP RING	40070124801	BTG70950	TEFRON	1			A
24	O-RING	40070124601	RNG70950	NBR	1			A

1.4.1 Track drive 驱动马达

23	BACK UP RING	40070124701	BTG70900	TEFRON	1			A
22	O-RING	40070124501	RNG70900	NBR	1			A
21	PARKING PISTON	31040268701	JA5H4014	FCD50	1			B
20	PARKING PLATE	41990124401	JA5H4013	S45C	4			B
19	FRICTION PLATE	41990124301	JA5H4012	SCM415 PAPERorREBBER	3			B
II-C-18	PISTON ASS'Y	31050440001	JR4R7012	SCM415+P31C-E	7			B
II-C	PISTON KIT		JB4R7033					X
II-A-17	VALVE PLATE	21040570101	JB4R7005	SS41+LBC3	1			B
II-B-16	SET PLATE	31050451601	JA5H4008	SCM415	1			B
II-B-15	BALL GUIDE	31040271101 31050349601	JA5H4007	SCM415	1			B
II-B	RETAINER KIT		JA5H4051					X
II-A-14	PIN	41590221101	JA5H4006	SK5/SUJ2	3	φ2.5x23.8L		A
II-A-13	SNAP RING	40100067801	IRTWSR28CH		1	IRTW-28		A
II-A-12	SPRING	41520124101	JA5H4005	PW	1			B
II-A-11	SPRING SEAT	31040216901	JA4L3007	SK5	2			B
II-A-10	CYLINDER BLOCK	21040570001	JB4R7011	FCD60	1			B
II-A	CYLINDER BLOCK KIT	21040570301	JB4R7032					X
II	ROTARY KIT		JB4R7031					C
9	SWASH PLATE	31040270301 31040270201	JB4R7004	FCD60	1			B
8	STEEL BALL	41570235101	SB12		2	φ12.700		A
7	SPRING	41520105001	JB4R7003	PW	1			B
I-6	SWASH PISTON	31050416001	JB4R7002	S45C	1			B
I	SWASH PISTON KIT		JB4R7030					X
5	ROLLER BEARING	41570235001	NJ204ET	SCM420H	1	NJ204ET		A
4	SHAFT	31040270201	JB4R7013	SCM420H	1			B
3	OIL SEAL	41580223801	SNVAP0997		1	AP0997(TCV)		A
2	EXPAND	40990035301	EP5		1	φ5		A
1	SHAFT CASING	31040270901	JB6G7001	FCD60	1			B

번호 NO.	품명 PART NAME	품번 PART NUMBER	도번 DWG. NUMBER	재료 MATERIAL	수량 Q'TY	비고 REMARK	KIT NO.	RSP
<p>IMPORTANT NOTICE : EATON CORPORATION - CONFIDENTIAL AND PROPRIETARY NOTICE TO PERSONS RECEIVING THIS DRAWING AND / OR TECHNICAL INFORMATION</p> <p>THIS DOCUMENT, INCLUDING THE DRAWING AND INFORMATION CONTAINED THEREON, IS CONFIDENTIAL AND IS THE EXCLUSIVE PROPERTY OF EATON CORPORATION, AND IS LOANED AND SUBJECT TO RECALL BY EATON AT ANY TIME, BY TAKING POSSESSION OF THIS DOCUMENT, THE RECIPIENT ACKNOWLEDGES AND AGREES THAT THIS DOCUMENT CANNOT BE USED IN ANY MANNER ADVERSE TO THE INTERESTS OF EATON, AND THAT NO PORTION OF THIS DOCUMENT MAY BE COPIED OR OTHERWISE REPRODUCED WITHOUT THE PRIOR WRITTEN CONSENT OF EATON, IN THE CASE OF CONFLICTING CONTRACTUAL PROVISIONS, THIS NOTICE SHALL GOVERN THE STATUS OF THIS DOCUMENT. COPYRIGHT 2008 EATON CORPORATION - ALL RIGHTS RESERVED</p>								
<p>표면다듬질 Surf. Texture</p>				<p>EATON Industrial Sector Hydraulics Group Busan, Korea Powering Business Worldwide</p>				
<p>Sign. Date Proj.</p>				<p>품명 Track Drive</p>				
<p>Design Teegu, Kim Nov 04, 2015  3rd</p>				<p>품번 11010093401</p>				
<p>Review Changho, Chung Nov 09, 2015 Scale None</p>				<p>도번 JB6G7000</p>				
<p>Appv. In, Kim Nov 12, 2015 Dimension Metric</p>				<p>재료 Material</p>		<p>중량 Weight</p>		
				<p>A 2 개정 Rev. B</p>		<p>2 번째 OF 2 장중 SHEET</p>		

1.4.1 Track drive 驱动马达



1.4.2 Track reducer 减速机

번호 NO.	품명 PART NAME	품번 PART NUMBER	도번 DWG. NUMBER	재질 MATERIAL	수량 Q'TY	비고 REMARK	KIT NO.	RSP
30	PLUG	30040000501	MS50D110	Alloy steel	1	PF3/8		B
29	STOP RING	31040268101	JA5H4046	Carbon steel	1			B
28	O-RING	40070079801	RNP90080	Rubber	1			A
27	PLUG	30040213901	MS50S208-3	Alloy steel	1	PF1/8		B
26	O-RING	40070005201	RNP90140	Rubber	2			A
25	PLUG	31040215901	JA6C5017	Alloy steel	1	PF3/8		B
24	RING GEAR COVER	31040499201	JB4R9013	Cast Iron	1			B
23	O-RING	40070270101	RNG91450	Rubber	1			A
22	SNAP RING	40100123701	SR18CS	Carbon steel	3	φ18(축용)		A
21	THRUST PLATE	31040499101	JB4R9012	Carbon steel	1			B
20	DRIVE GEAR	31040499001	JB4R9011	Alloy steel	1	M:2 Z:11		B
19	NEEDLE	31040498901	JB4R9010	Bearing steel	15x3	φ4, 7x14, 8		A
18	PLANET GEAR(A)	31040498801	JB4R9009	Alloy steel	3	M:2 Z:25		B
17	WASHER(2)	31040267401	JA5H4038	Carbon steel	3	φ2, 5x15L		B
16	SPRING PIN	41520123501	SP2515	Carbon steel	3			A
15	PIN	31040498701	JB4R9008	Bearing steel	3			A
14	SUN GEAR	31040498601	JB4R9007	Alloy steel	1	M:2 Z:13		B
13	CARRIER	31040498501	JB4R9006	Cast Iron	1	M:2 Z:13		B
12	SNAP RING	40100123301	SR22CS	Carbon steel	4	φ22(축용)		A
11	PLATE	31040498401	JB4R9005	Carbon steel	1			B
10	NEEDLE	31040498301	JB4R9004	Bearing steel	23x4	φ4, 1x29, 7		B
09	COLLAR	31040498201	JB4R9003	Bearing steel	4	JR22x26x30		B
08	PLANET GEAR(B)	31040498101	JB4R9002	Alloy steel	4	M:2 Z:26		B
07	WASHER(1)	31040266801	JA5H4030	Carbon steel	4			B
06	SNAP RING	40100123001	JA5H4029	Carbon steel	1			B
05	SNAP RING	40100122901	JA5H4028	Carbon steel	1			B
04	BEARING	41570210301	JA5H4027	Bearing steel	2	φ110xφ140x16		B
03	RING GEAR	31040499301	JB6G9001	Cast Iron	1	M:2 Z:67		B
02	FLOATING SEAL	41990122701	JS1240F	Synthetic rubber	1			A
01	T/V MOTOR ASS'Y				1			

IMPORTANT NOTICE : EATON CORPORATION - CONFIDENTIAL AND PROPRIETARY NOTICE TO PERSONS RECEIVING THIS DRAWING AND / OR TECHNICAL INFORMATION THIS DOCUMENT, INCLUDING THE DRAWING AND INFORMATION CONTAINED THEREON, IS CONFIDENTIAL AND IS THE EXCLUSIVE PROPERTY OF EATON CORPORATION, AND IS LOANED AND SUBJECT TO RECALL BY EATON AT ANY TIME. BY TAKING POSSESSION OF THIS DOCUMENT, THE RECIPIENT ACKNOWLEDGES AND AGREES THAT THIS DOCUMENT CANNOT BE USED IN ANY MANNER ADVERSE TO THE INTERESTS OF EATON, AND THAT NO PORTION OF THIS DOCUMENT MAY BE COPIED OR OTHERWISE REPRODUCED WITHOUT THE PRIOR WRITTEN CONSENT OF EATON. IN THE CASE OF CONFLICTING CONTRACTUAL PROVISIONS, THIS NOTICE SHALL GOVERN THE STATUS OF THIS DOCUMENT. COPYRIGHT 2008 EATON CORPORATION - ALL RIGHTS RESERVED				 EATON Powering Business Worldwide		Industrial Sector Hydraulics Group Busan, Korea	
품명 Part Name Track Reducer				품번 Part. Number 11010093701			
도번 Dwg. Number JB6G9000				재질 Material		중량 Weight	
	Sign.	Date	Proj.	A 2	기정 Rev. B	1	번 OF 1
Design	Taegu, Kim	Nov, 04, 2015	 Scale None			장중 SHEET	
Review	Changho, Chung	Nov, 12, 2015					
Appv.	Ian, Kim	Nov, 12, 2015	Dimension Metric				

1.4.2 Track reducer 减速机

REV. B 0006999B C 1.4.2

ZONE	REVISION DESCRIPTION	DATE	CHK	APP	DATE
EP	0-40000 파트입력 변경	19. Kim	OK	OK	Dec. 01, 2019

FIRST ISSUE

1.4.2

구분	1차	2차
RING GEAR	2	87
PLANET GEAR	2	27
SUN GEAR	2	13
감속비	42.636 / 1	

127	5,145	3.0	27
1	16.621	3.0	41.5
20	41.5	3.0	41.5

유압유	SK Gear EP 150(4.0)
윤활유	SK Gear EP 150(4.0)
윤활유	SK Gear EP 150(4.0)

NOTE

1. SPECIFICATIONS FOR GEAR BOX OIL
2. LEAK TEST : AIR PRESSURE 2.0 kgf/cm², 3 MINUTES WILL NOT LEAK
3. APPLY LOCITE 262 WHEN TIGHTENING ALL OF BOLT.
4. SUPPLY AT A SINGLE TYPE REDUCER, GEAR OIL DO FILL.
5. PAINTING (--- PORTION IS EXCLUDED)

1) STATUS : -

2) THICKNESS : -

3) COLOR : -

4) POLY URETHAN-RESIN

REVIEWED FOR CLASSIFICATION PER ESP-042

Model Code : JTR0034302AA

SE PLUG	304000001	M500115	After steel	1	1	1	1
SP STOP RING	314002801	JRH6408	After steel	1	1	1	1
C-P-RING	400707901	FRP9305	After steel	1	1	1	1
C-P-RING	304002190	M500208-3	After steel	1	1	1	1
C-P-RING	400706001	FRP9114	After steel	2	1	1	1
C-P-RING	314002190	JRH6417	After steel	1	1	1	1
C-P-RING	314004901	JRH6413	After steel	1	1	1	1
C-P-RING	400702700	FRP91402	After steel	1	1	1	1
CAMP RING	401001270	SP1805	After steel	3	1	1	1
THRUST PLATE	314004901	JRH6412	After steel	1	1	1	1
THRUST BEAR	314004901	JRH6411	After steel	1	1	1	1
PLANET BEAR(A)	314004901	JRH6415	After steel	1	1	1	1
PLANET BEAR(B)	314004901	JRH6416	After steel	1	1	1	1
WASHER(2)	410012201	SP2515	After steel	3	1	1	1
WASHER(3)	410012201	SP2515	After steel	3	1	1	1
SPRING PIN	314004901	JRH6409	After steel	3	1	1	1
SUN GEAR	314004901	JRH6408	After steel	1	1	1	1
CARRIER	4010012201	SP2225	After steel	1	1	1	1
SAMP RING	4010012201	SP2225	After steel	1	1	1	1
PLATE	314004901	JRH6405	After steel	1	1	1	1
NEEDLE	314004901	JRH6404	After steel	1	1	1	1
COLLAR	314004901	JRH6403	After steel	1	1	1	1
PLANET BEAR(B)	314004901	JRH6402	After steel	1	1	1	1
WASHER(1)	410012201	JRH6402	After steel	1	1	1	1
SAMP RING	4010012201	JRH6402	After steel	1	1	1	1
CAMP RING	410012201	JRH6402	After steel	1	1	1	1
SPRING	410012201	JRH6402	After steel	1	1	1	1
THRUST BEAR	314004901	JRH6402	After steel	1	1	1	1
PLUNTING SEAL	410012201	JRH6402	After steel	1	1	1	1
WASHER	410012201	JRH6402	After steel	1	1	1	1
SPRING	410012201	JRH6402	After steel	1	1	1	1

Classification

A : General Standard Products

B : Our Company Produced Goods

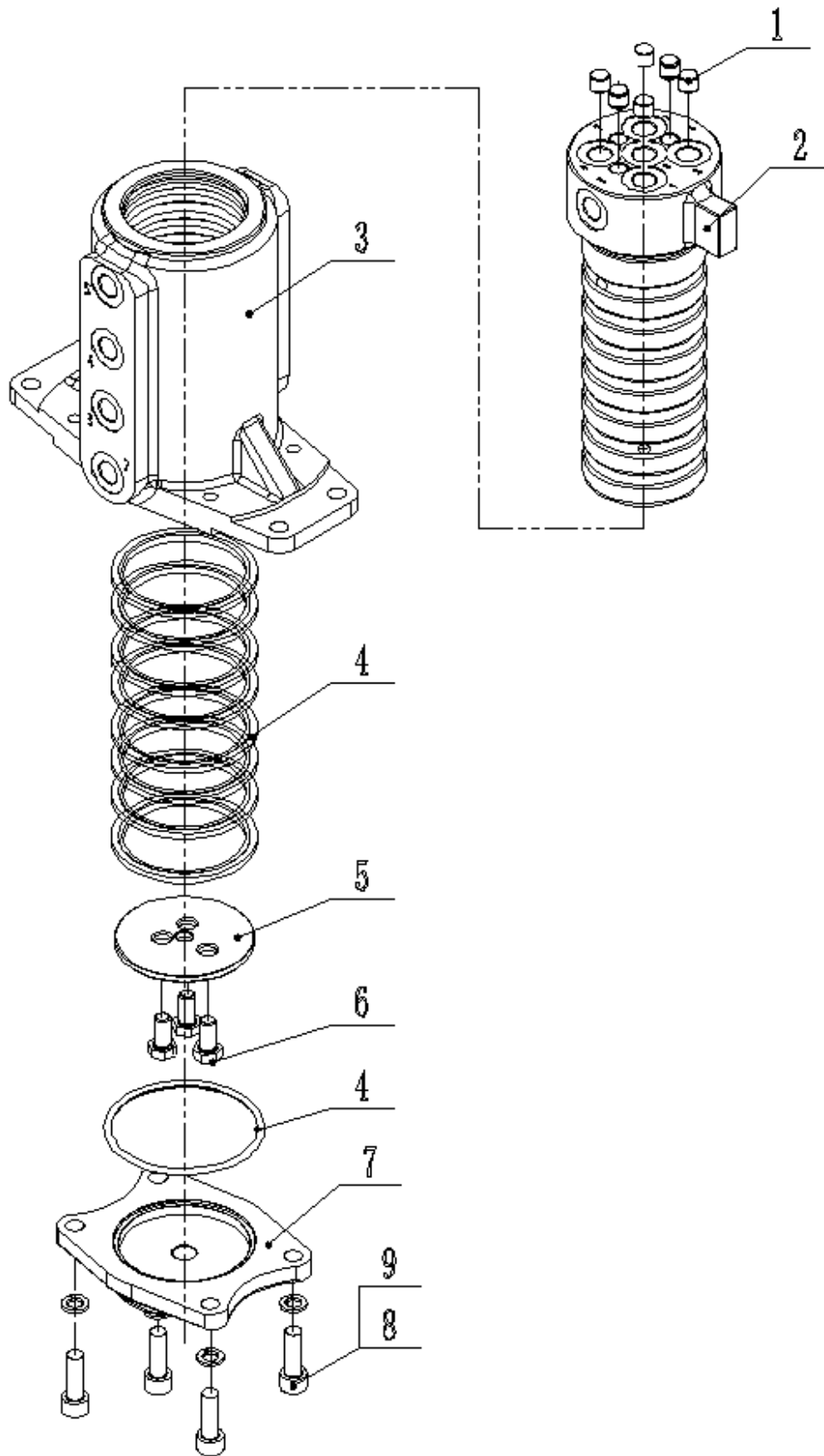
C : AS'Y And KIT Suppl Item

X : Not Supplied

1.18 Swivel joint 回转接头

序号 ITEM	零件号 PART NO.	Part Name	零件名称	数量 Q'TY	备注 Remark
1	ZG1/8	Plug	工艺螺堵	10	
2	FSJ20080-0100-00004A	Oil distribution shaft assembly	配油轴组件	1	
3	FSJ20080-0000-00001A	Housing	回转体	1	
4	FSJ20-31A-05000	Kit-seal	密封件修理包	1	
5	FSJ20080-0100-00006	Retaining ring	挡圈	1	
6	GB/T5781-M8x16-10.9	Hex bolts	六角头螺栓	3	
7	FSJ20080-0100-00003	End cover	端盖	1	
8	GB/T70.1-M8X25-10.9	Hexagon socket bolt	内六角圆柱头	4	
9	GB/T93-8	Spring washer	弹簧垫圈	4	

1.18 Swivel joint 回转接头



2.0 MAIN FRAME ASSY 上车架

序号 ITEM	零件号 PART NO.	Part Name	零件名称	数量 Q'TY	备注 Remark
1	2.1	Upper bracket welding	上支架焊合	1	
2	2.2	Rubber sheath	橡胶护套	1	
3	2.3	Rubber sheath	橡胶护套	1	
4	2.4	Rubber sheath	橡胶护套	1	
5	2.5	Rubber sheath	橡胶护套	1	
6	2.6	Shock absorbing bushings	减震套	2	
7	2.7	Front pins for Cabin	驾驶室前轴	2	
8	2.8	Bushings	摆头钢套	2	
9	2.9	Swing joint	转向头	1	
10	2.10	Front shaft for swing joint cylinder	摆头油缸前轴	1	
11	2.11	Swing joint shaft	摆头轴	1	
12	2.12	Shaft connecting boom and swing joint	动臂与转向头连接轴	1	
13	2.13	Lower shaft for boom cylinder	动臂缸下轴	1	
14	2.14	Battery	电瓶	1	
15	2.15	The battery holder	电瓶压板	1	
16	2.16	Limit pin steel sleeve	限位套	1	
17	2.17	Limit pin	限位轴	1	
18	2.18	Battery lock	电瓶锁	1	
19	2.19	Cover plate	盖板	1	
20	2.20	Main valve bracket	主阀支架	1	
21	2.21	Main valve assembly	主阀总成	1	
22	2.22	Oil source valve	油源阀	1	
23	2.23	Cab Lifting cylinder	举升油缸	1	
24	2.24	Anti-falling bracket	防自落支架	1	
25	2.25	Up pin for Lifting cylinder	举升油缸上轴	1	
26	2.26	Spacer	垫块	1	
27	2.27	Lift cylinder lower shaft	举升油缸下轴	1	
28	2.28	Rotary motor	回转马达	1	
29	2.29	Swing joint cylinder	摆头油缸	1	
30	2.30	Rear pin for swing joint cylinder	摆头缸后轴	1	
31	2.31	Swivel joint stuck plate	回转接头卡板	1	
32	2.32	The seat for Solenoid directional valve	电磁换向阀座板	1	
33	2.33	Solenoid directional valve	电磁换向阀	1	

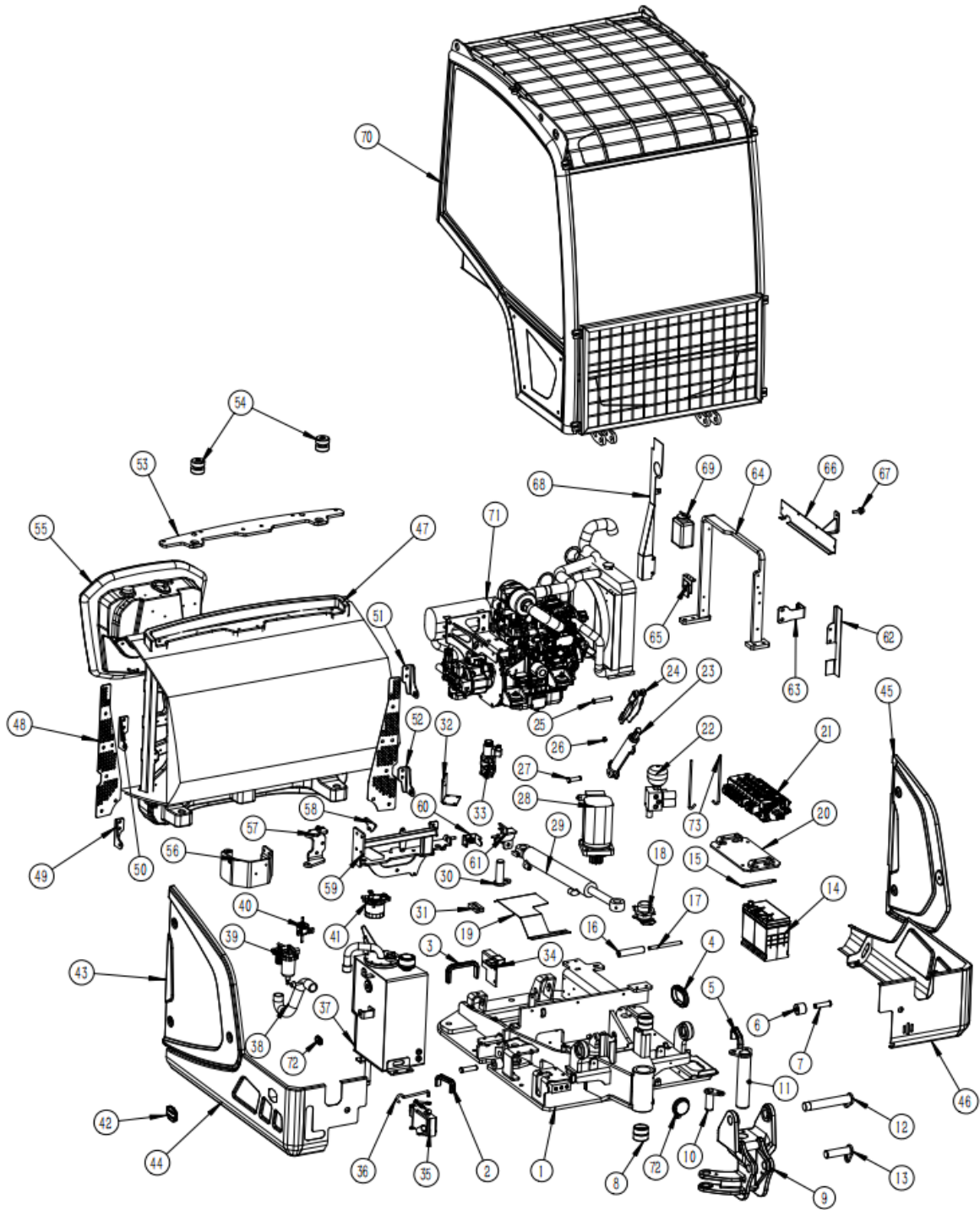
2.0 MAIN FRAME ASSY 上车架

序号 ITEM	零件号 PART NO.	Part Name	零件名称	数量 Q'TY	备注 Remark
34	2.34	Fuse box bracket	保险盒支架	1	
35	2.35	Lifting pump	举升泵	1	
36	2.36	Safe lever for lifting pump	拉杆	1	
37	2.37	Hydraulic oil tank	液压油箱	1	
38	2.38	Hydraulic oil suction pipe	吸油管	1	
39	2.39	Oil-water separator	油水分离器	1	
40	2.40	Fuel pump	输油泵	1	
41	2.41	Diesel fuel filter	柴油滤芯	1	
42	2.42	Rubber cover	橡胶套	1	
43	2.43	Cover 05	覆盖件 05	1	
44	2.44	Right Protective steel plate	右侧护围	1	
45	2.45	Cover 06	覆盖件 06	1	
46	2.46	Left Protective steel plate	左侧护围	1	
47	2.47	Counter Weight	配重	1	
48	2.48	Foreign object blocking net	过滤网	1	
49	2.49	Right cover holder	右侧固定板	1	
50	2.50	Right cover holder	右覆盖件固定板焊合	1	
51	2.51	Left cover holder	左侧固定板焊合	1	
52	2.52	Left cover holder	左覆盖件固定板焊合	1	
53	2.53	Support plate	支撑板	1	
54	2.54	Cab rubber pier	驾驶室胶墩	2	
55	2.55	Diesel tank	柴油箱	1	
56	2.56	Diesel tank support arm	拐臂焊合	1	
57	2.57	Diesel tank bracket fixing seat	柴油箱支架固定座	1	
58	2.58	Stuck board	卡板	1	
59	2.59	Diesel tank bracket	柴油箱支架	1	
60	2.60	Diesel tank lock	柴油箱锁	1	
61	2.61	Diesel tank lock base	柴油箱锁座	1	
62	2.62	Front windshield	前隔风板	1	
63	2.63	Left cover holder	左覆盖件固定座	1	
64	2.64	Radiator frame	水箱框架	1	
65	2.65	Overflow kettle holder	溢水壶支架	1	
66	2.66	Up windshield	上隔风板	1	
67	2.67	Limiting rubber pier	限位胶墩	2	

2.0 MAIN FRAME ASSY 上车架

序号 ITEM	零件号 PART NO.	Part Name	零件名称	数量 Q'TY	备注 Remark
68	2.68	Rear windshield	后隔风板	1	
69	2.69	Overflow kettle	溢水壶	1	
70	2.70	Cab assembly	驾驶室总成	1	
71	2.71	Engine assembly	发动机总成	1	
72	2.72	Horn	喇叭	1	
73	2.73	Hook	挂钩	2	

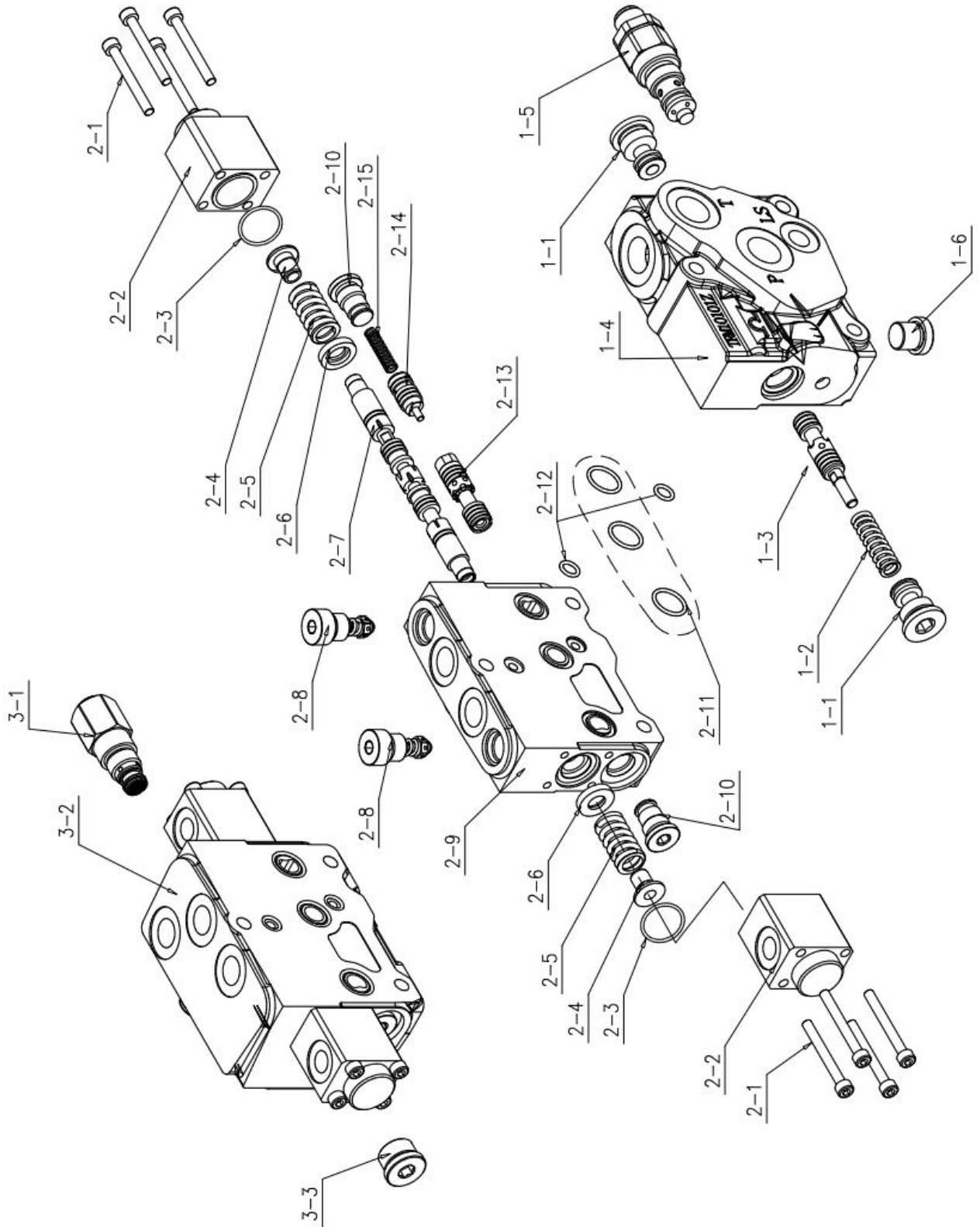
2.0 MAIN FRAME ASSY 上车架



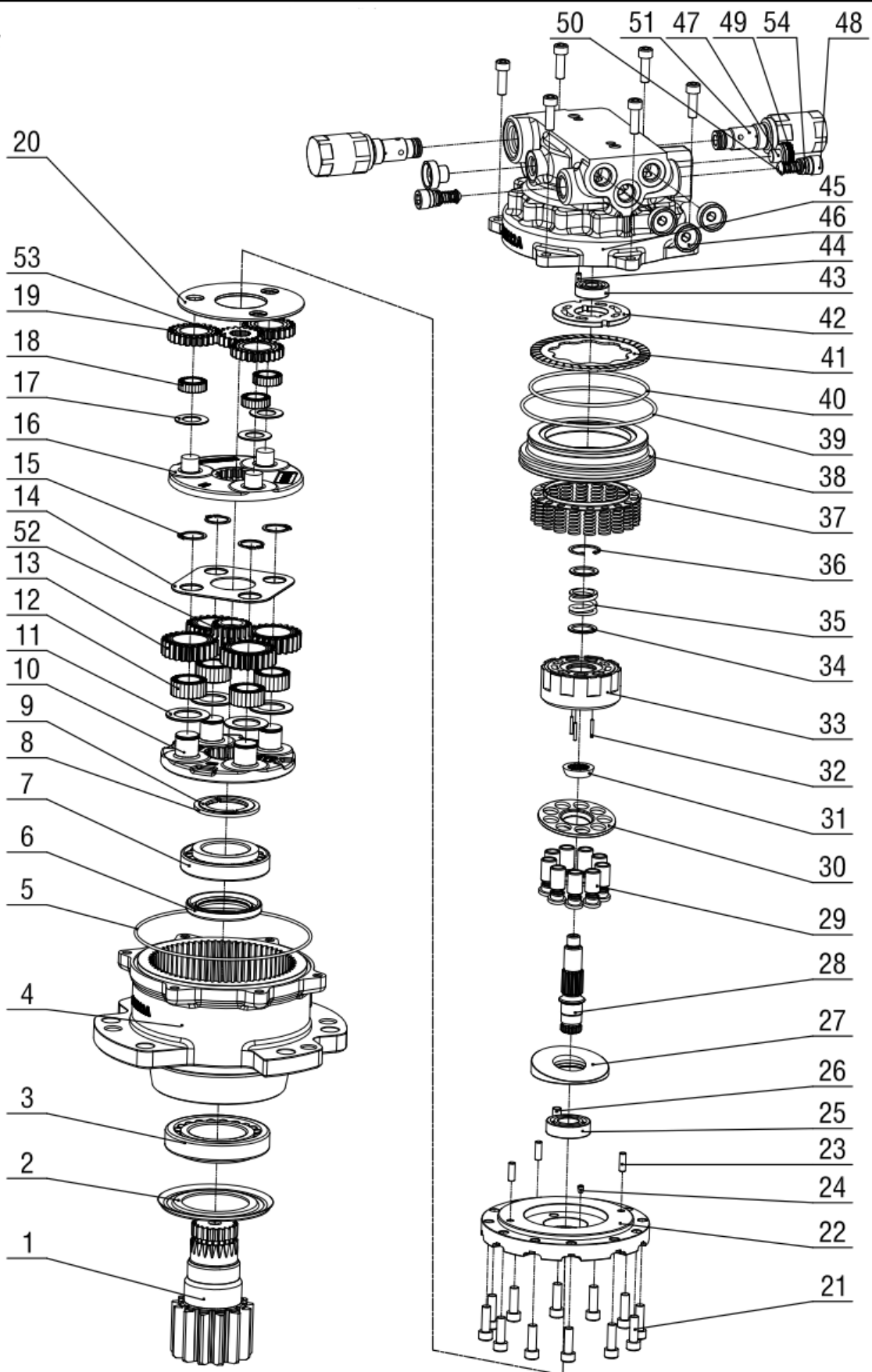
2.21 Main Valve Assembly 主阀总成

序号 ITEM	零件号 PART NO.	Part Name	零件名称	数量 Q'TY	备注 Remark
1	1-1	Differential pressure valve screw plug	压差阀螺堵	2	进油阀片 (首联)
2	1-2	Differential pressure valve spring	压差阀弹簧	1	
3	1-3	Differential pressure valve core	压差阀芯	1	
4	1-4	Oil inlet valve block	进油阀体	1	
5	1-5	LS relief valve	LS 溢流阀	1	
6	1-6	Screw plug	螺堵	1	
7	2-1	Hexagon socket bolts	内六角螺栓	8	换向阀片 (工作联)
8	2-2	End cover	端盖	2	
9	2-3	O-ring	O 型圈	2	
10	2-4	Limit steel sleeve	限位套	2	
11	2-5	Spring	弹簧	2	
12	2-6	Spring seat	弹簧座	2	
13	2-7	Valve rod	阀杆	1	
14	2-8	Overload oil charge valve	过载补油阀	2	
15	2-9	Single valve body	换向阀体	1	
16	2-10	Screw plug	螺堵	2	
17	2-11	O-ring	O 型圈	3	
18	2-12	O-ring	O 型圈	2	
19	2-13	Compensation spool	补偿阀芯	1	
20	2-14	Putter	推杆	1	
21	2-15	Spring	弹簧	1	
22	3-1	Screw plug	螺堵	1	尾联
23	3-2	Oil return valve body	回油阀体	1	
24	3-3	LS flow valve	LS 流量阀	1	

2.21 Main Valve Assembly 主阀总成



2.28 Rotary motor 回转马达



2.28 Rotary motor 回转马达

序号 ITEM	零件号 PART NO.	Part Name	零件名称	数量 Q'TY	备注 Remark
1	2.41.1	Reduction drive shaft	减速驱动轴	1	
2	2.41.2	Dust cover	防尘盖	1	
3	2.41.3	Tapered Roller Bearings	圆锥滚子轴承	1	
4	2.41.4	Reducer housing	减速壳体	1	
5	2.41.5	O-ring	O 型圈	1	
6	2.41.6	Skeleton oil seal	骨架油封	1	
7	2.41.7	Tapered Roller Bearings	圆锥滚子轴承	1	
8	2.41.8	Ring	圆环	1	
9	2.41.9	Half ring	半环	2	
10	2.41.10	Planet carrier 2	行星架 2	1	
11	2.41.11	Gasket 2	垫片 2	4	
12	2.41.12	Needle roller bearings without outer ring	无外圈满装滚针轴承	4	
13	2.41.13	Planet gear 2	行星轮 2	4	
14	2.41.14	Gear cover 2	齿轮盖板 2	1	
15	2.41.15	Shaft retaining ring	轴用挡圈	4	
16	2.41.16	Planet carrier 1	行星架 1	1	
17	2.41.17	Gasket 1	垫片 1	3	
18	2.41.18	Needle roller bearings without outer ring	无外圈满装滚针轴承	3	
19	2.41.19	Planet gear 1	行星轮 1	3	
20	2.41.20	Gear cover 1	齿轮盖板 1	1	
21	2.41.21	Hexagon socket bolts	内六角螺栓	18	
22	2.41.22	Motor cover	马达盖板	1	
23	2.41.23	Pin	圆柱销	3	
24	2.41.24	Small filter bag	小滤袋	1	
25	2.41.25	Deep groove ball bearing	深沟球轴承	1	
26	2.41.26	Pin	圆柱销	1	
27	2.41.27	Swash plate	斜盘	1	
28	2.41.28	Motor drive shaft	马达驱动轴	1	
29	2.41.29	Piston assembly	柱塞滑靴组件	9	
30	2.41.30	Retainer-Slipper	压盘	1	
31	2.41.31	Retaining ball	球铰	1	
32	2.41.32	Pin	圆柱销	3	
33	2.41.33	Cylinder block	缸体	1	

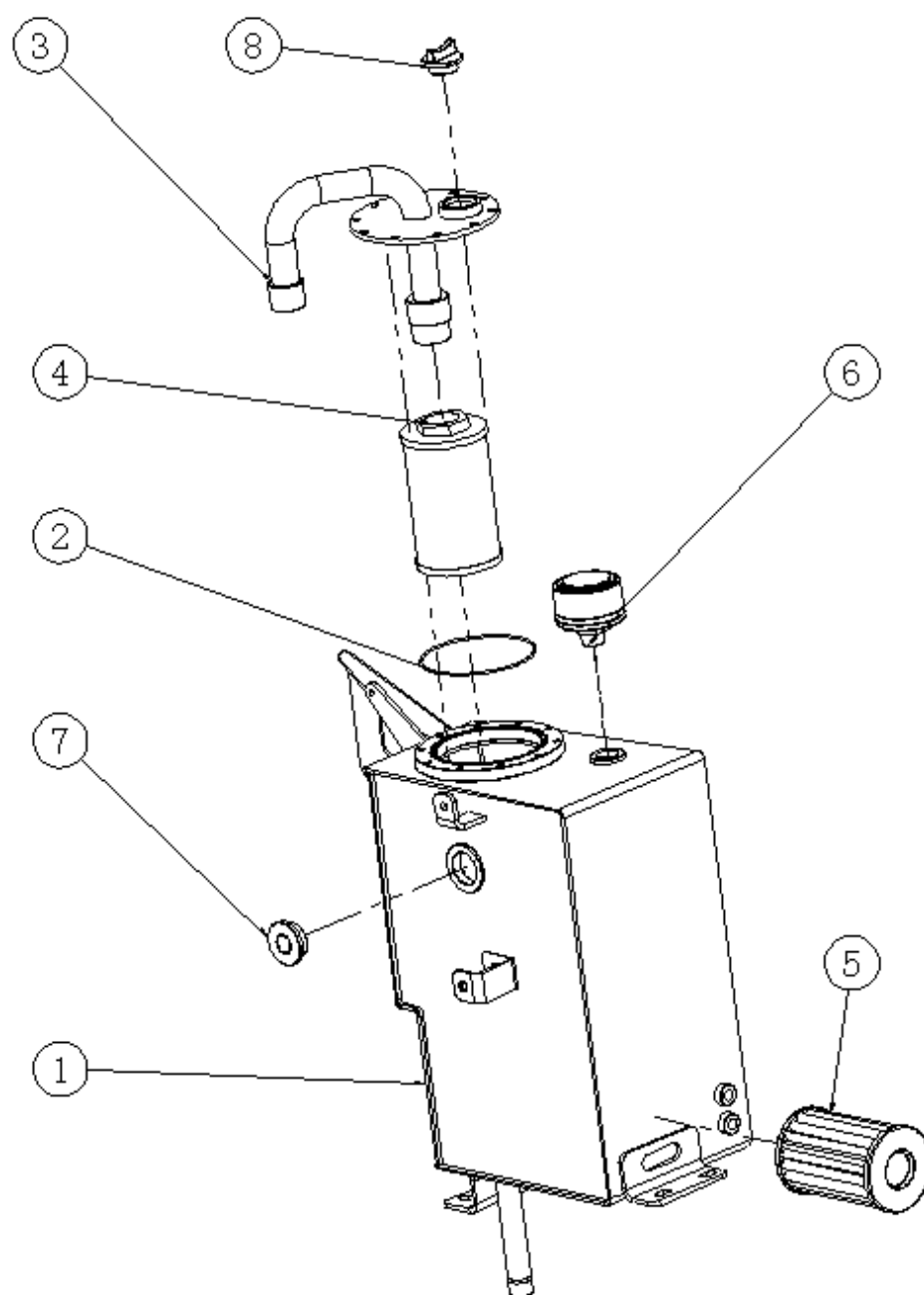
2.28 ROTARY MOTOR 回转马达

序号 ITEM	零件号 PART NO.	Part Name	零件名称	数量 Q'TY	备注 Remark
34	2.41.34	Flat Washers	缸体平垫圈	2	
35	2.41.35	Spring	缸体弹簧	1	
36	2.41.36	Retaining ring	孔用挡圈	1	
37	2.41.37	Brake spring assembly	制动弹簧组件	1	
38	2.41.38	Brake piston	制动活塞	1	
39	2.41.39	O-ring	O 型圈	1	
40	2.41.40	O-ring	O 型圈	1	
41	2.41.41	Friction plate	摩擦片	1	
42	2.41.42	Port plate	配油盘	1	
43	2.41.43	Deep groove ball bearing-0	深沟球轴承-0	1	
44	2.41.44	Elastic cylindrical pin (heavy duty)	弹性圆柱销 (重型)	1	
45	2.41.45	Motor housing	马达壳体	1	
46	2.41.46	Dust plug	防尘塞	4	
47	2.41.47	Dust plug	防尘塞	1	
48	2.41.48	One-way valve cover	单向阀盖	2	
49	2.41.49	One-way valve spring	单向阀弹簧	2	
50	2.41.50	One-way valve core	单向阀芯	2	
51	2.41.51	Relief valve assembly-0	溢流阀组件-0	2	
52	2.41.52	Sun gear 2	太阳轮 2	1	
53	2.41.53	Sun gear 1	太阳轮 1	1	
54	2.41.54	O-ring	O 型圈	2	

2.37 Hydraulic oil tank assembly 液压油箱总成

序号 ITEM	零件号 PART NO.	Part Name	零件名称	数量 Q'TY	备注 Remark
1	2.37.1	Hydraulic tank welding	液压油箱焊接	1	
2	2.37.2	O-rings	O型圈	1	
3	2.37.3	Oil return port	回油口焊合	1	
4	2.37.4	Return oil filter	回油滤芯	1	
5	2.37.5	Oil suction filter	吸油滤芯	1	
6	2.37.6	Breathing valve	呼吸器	1	
7	2.37.7	Hydraulic oil level observation hole	圆形油标	1	
8	2.37.8	Cap	油箱盖	1	

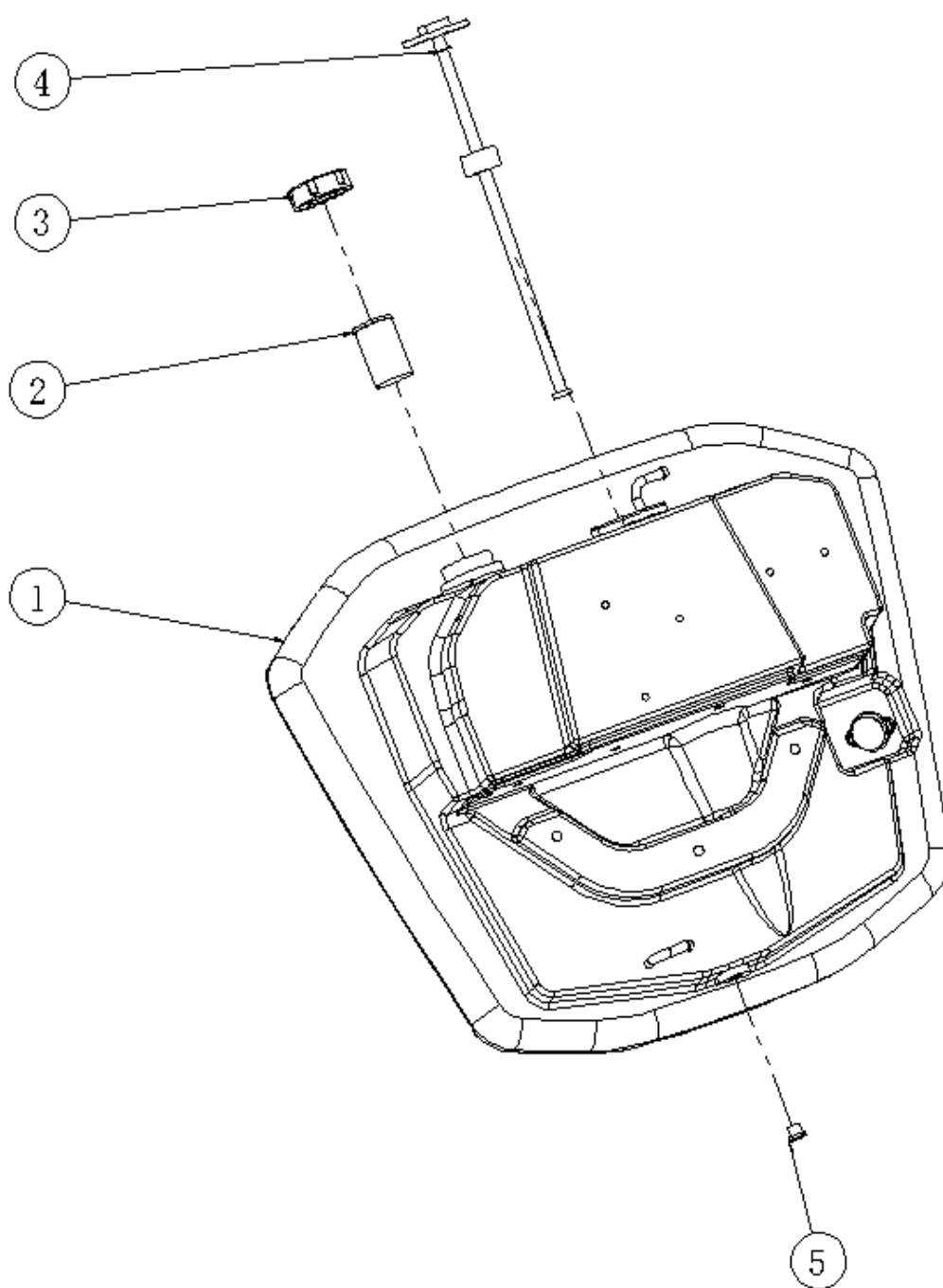
2.37 Hydraulic oil tank assembly 液压油箱总成



2.55 Diesel tank assembly 柴油箱总成

序号 ITEM	零件号 PART NO.	Part Name	零件名称	数量 Q'TY	备注 Remark
1	2.51.1	Diesel fuel tank	柴油箱	1	
2	2.51.2	Filter net	滤网	1	
3	2.51.3	Fuel tank cap	油箱盖	1	
4	2.51.4	Diesel sensor	柴油传感器	1	
5	2.51.5	Diesel drain port	放油口	1	

2.55 Diesel tank assembly 柴油箱总成



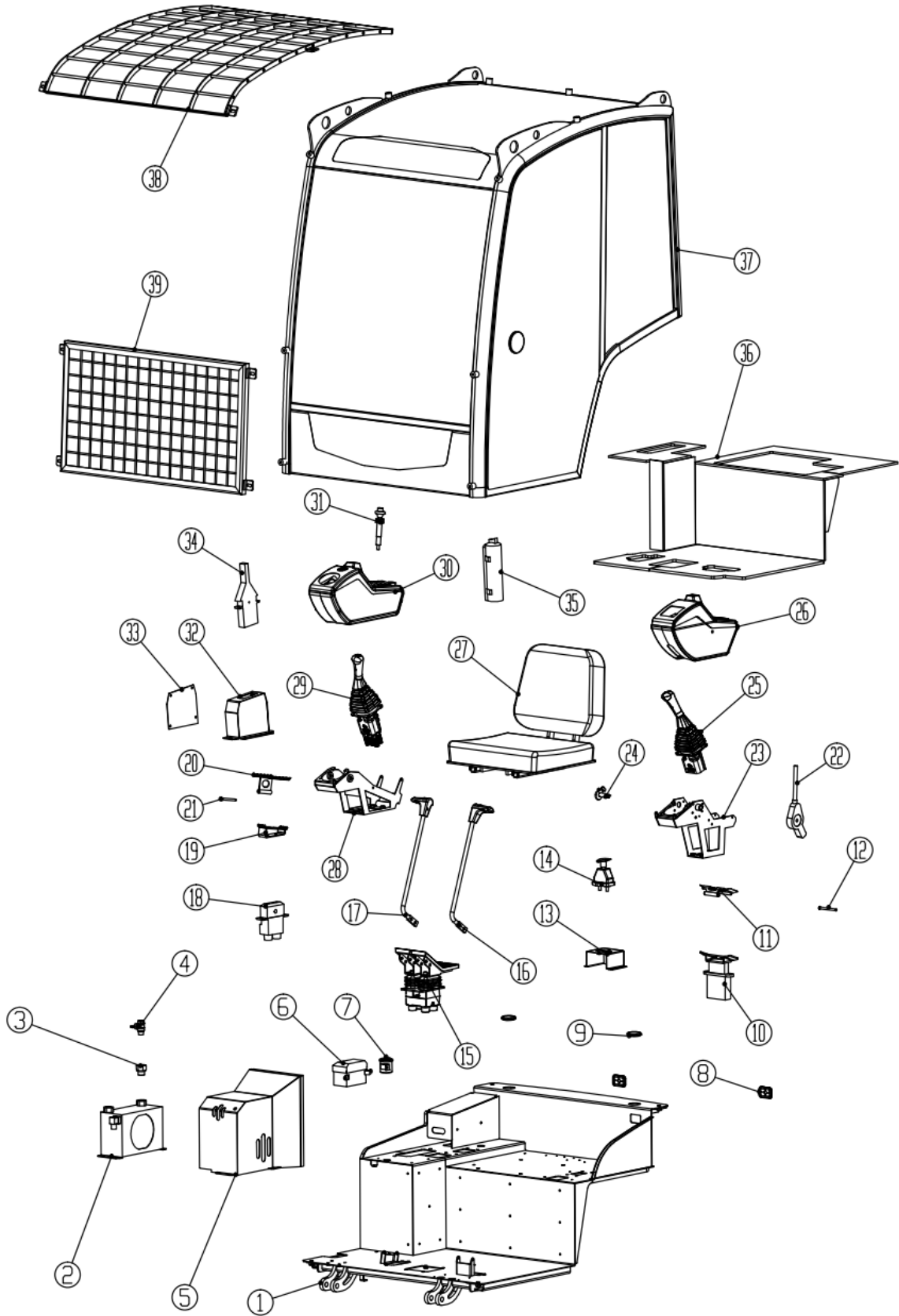
2.70 Cab assembly 驾驶室总成

序号 ITEM	零件号 PART NO.	Part Name	零件名称	数量 Q'TY	备注 Remark
1	2.70.1	Base plate	底板焊合	1	
2	2.70.2	Evaporation box	蒸发箱	1	
3	2.70.3	Transition threaded joint	过渡丝头	1	
4	2.70.4	Heater switch	暖风开关	1	
5	2.70.5	Heater hood	暖风罩	1	
6	2.70.6	Fusebox	保险盒	1	
7	2.70.7	Buzzer	蜂鸣器	1	
8	2.70.8	Harness rubber ring	线束胶套	2	
9	2.70.9	Cab rubber plug	驾驶室胶套	2	
10	2.70.10	Left Foot valve	脚踏阀	1	
11	2.70.11	Left Foot valve guard	左脚踏阀护板	1	
12	2.70.12	Pin	销轴	1	
13	2.70.13	Power switch base	蓄电池开关支座	1	
14	2.70.14	Power switch	蓄电池开关	1	
15	2.70.15	Travel foot valve	行走脚踏阀	1	
16	2.70.16	Left travel lever	左行走操作杆	1	
17	2.70.17	Right travel lever	右行走操作杆	1	
18	2.70.18	Right foot valve	右脚踏阀	1	
19	2.70.19	Right foot valve pedal	右脚踏阀踏板	1	
20	2.70.20	Right foot valve guard	右脚踏阀护板	1	
21	2.70.21	Pin	销轴	1	
22	2.70.22	Safe lever	安全杆	1	
23	2.70.23	Right joystick bracket	右手柄支架	1	
24	2.70.24	Rotating pin	转轴	1	
25	2.70.25	Right joystick	右手柄	1	
26	2.70.26	Right joystick box	右手柄盒	1	
27	2.70.27	Seat ASSY	座椅总成	1	
28	2.70.28	Left joystick bracket	左手柄支架	1	
29	2.70.29	Left Joystick	左手柄	1	
30	2.70.30	Left joystick box	左手柄盒	1	
31	2.70.31	Accelerator	手油门	1	
32	2.70.32	Dozer blade lever hood	前铲操作罩	1	
33	2.70.33	Cover	盖板	1	

2.70 Cab assembly 驾驶室总成

序号 ITEM	零件号 PART NO.	Part Name	零件名称	数量 Q'TY	备注 Remark
34	2.70.34	Dozer blade lever	前铲操作手柄	1	
35	2.70.35	Fire extinguisher	灭火器	1	
36	2.70.36	protective pad	护垫	1	
37	2.70.37	Cab ASSY	驾驶室总成	1	
38	2.70.38	Top protection net	顶防护网		
39	2.70.39	Front protection net	前防护网		

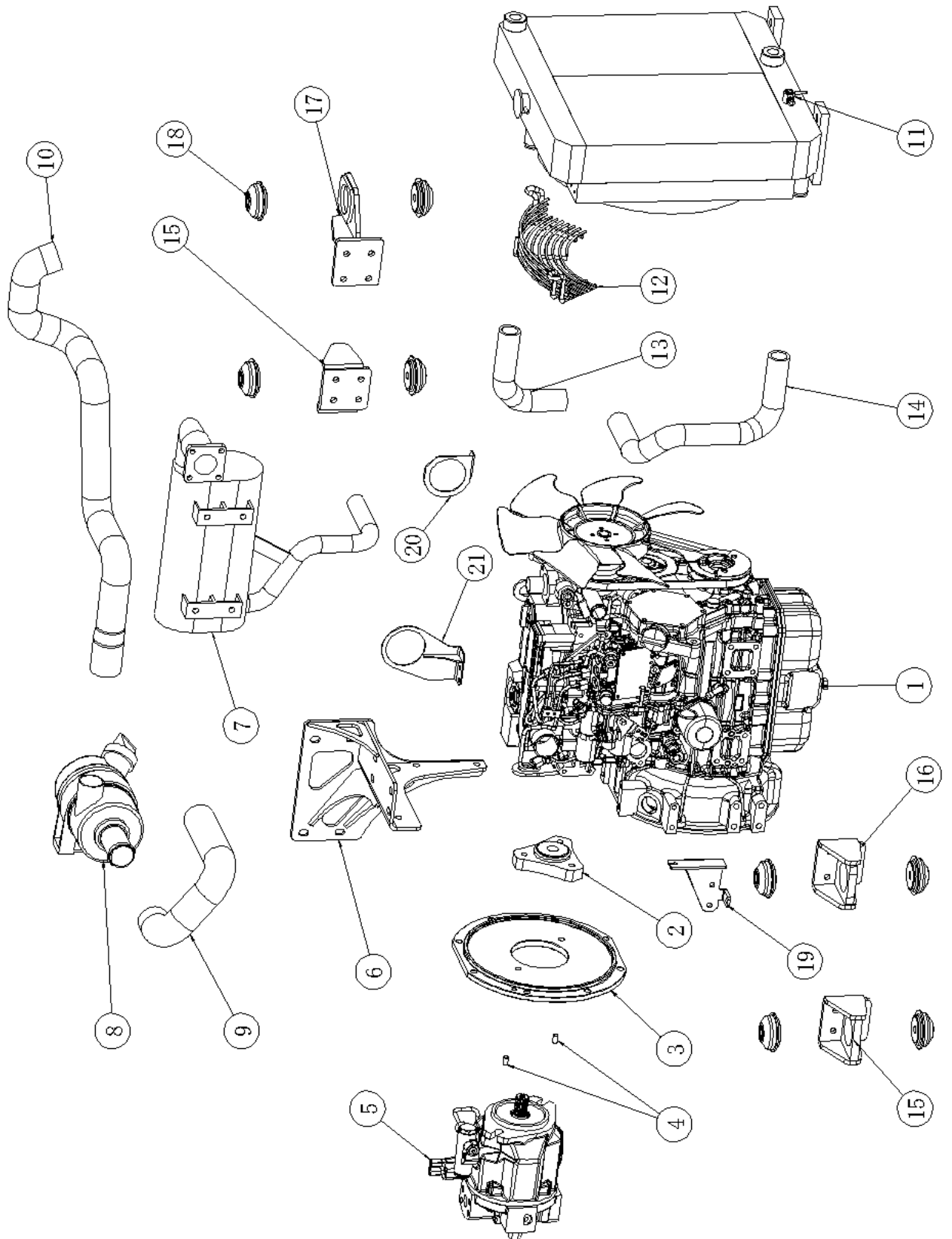
2.70 Cab assembly 驾驶室总成



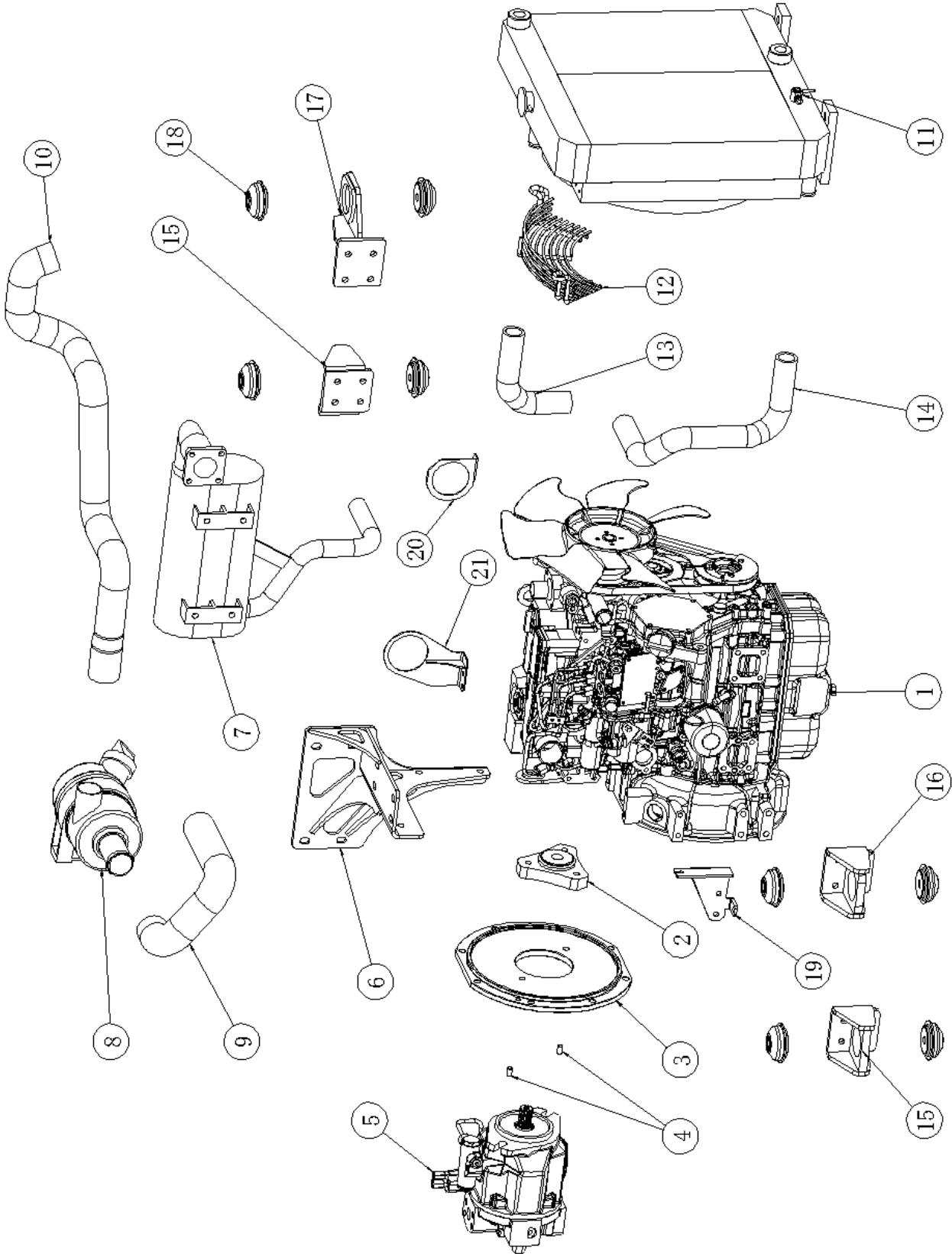
2.71 Engine ASSY 发动机总成

序号 ITEM	零件号 PART NO.	Part Name	零件名称	数量 Q'TY	备注 Remark
1	2.71.1	Engine	发动机	1	
2	2.71.2	Coupling	联轴器	1	
3	2.71.3	Pump disc	泵盘	1	
4	2.71.4	Positioning pin	定位销	1	
5	2.71.5	The main pump	主泵	1	
6	2.71.6	Silencer support	消音器支架	1	
7	2.71.7	Muffler	消音器	1	
8	2.71.8	Air filter	空气滤清器	1	
9	2.71.9	Engine intake pipe	发动机进气管	1	
10	2.71.10	Air filter intake pipe	空滤进气管	1	
11	2.71.11	Radiator	散热器	1	
12	2.71.12	Protecting net	防护罩	1	
13	2.71.13	Radiator outlet pipe	散热器出水管	1	
14	2.71.14	Radiator inlet pipe	进水管	1	
15	2.71.15	Right front/right rear engine mount	右前/右后机器腿	2	
16	2.71.16	Left front engine mount	左前机器腿	1	
17	2.71.17	Left rear engine mount	左后机器腿	1	
18	2.71.18	Engine rubber pier	发动机胶墩	8	
19	2.71.19	Accelerator cable bracket	油门线支架	1	
20	2.71.20	Air filter intake pipe bracket A	空滤进气管支架 A	1	
21	2.71.21	Air filter intake pipe bracket B	空滤进气管支架 B	1	

2.71 Engine ASSY 发动机总成



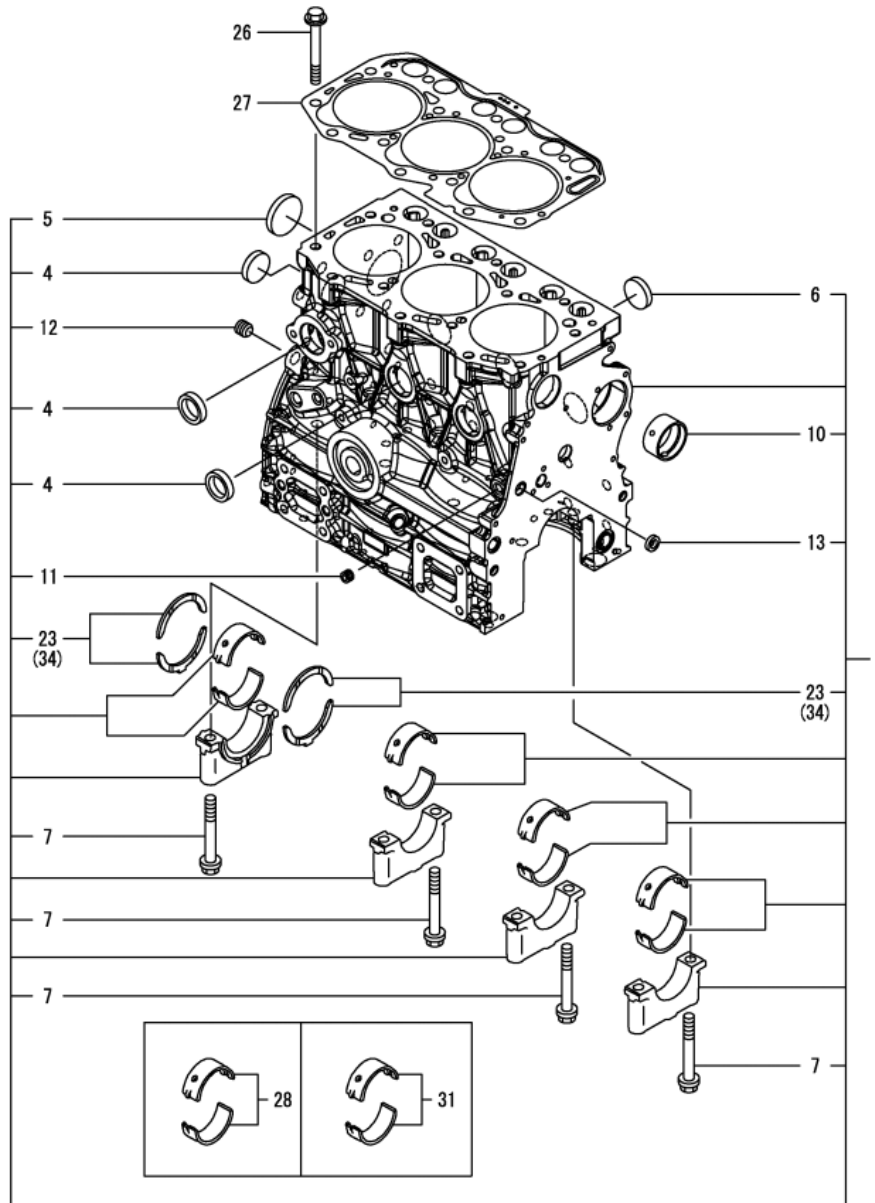
2.71.1 Engine ASSY 发动机总成



2.71.1 Engine 发动机 (3TNV80F-SPSY)

序号 ITEM	零件号 PART NO.	Part Name	零件名称	数量 Q'TY	备注 Remark
1	2.71.1.1	CYLINDER BLOCK	气缸体		
2	2.71.1.2	GEAR HOUSING	齿轮箱		
3	2.71.1.3	FLYWHEEL HOUSING & OLI SUMP	飞轮壳和油底壳		
4	2.71.1.4	CYLINDER HEAD & BONNET	气缸盖和阀盖		
5	2.71.1.5	EXHAUST MANIFOLD	排气歧管		
6	2.71.1.6	CAMSHAFT & DRIVING GEAR	凸轮轴和传动齿轮		
7	2.71.1.7	CRANKSHAFT & PISTON	曲轴和活塞		
8	2.71.1.8	LUB.OIL SYSTEM	润滑系统		
9	2.71.1.9	COOLING WATER SYSTEM	冷却系统		
10	2.71.1.10	FUEL INJECTION PUMP	燃油泵		
11	2.71.1.11	GOVERNOR	调速器		
12	2.71.1.12	FUEL INJECTION VALVE	喷油阀		
13	2.71.1.13	FUEL PIPE	燃油管		
14	2.71.1.14	STARTER MOTOR	启动马达		
15	2.71.1.15	GENERATOR	发电机		
16	2.71.1.16	ACCESSORY	附件		

2.71.1.1 Cylinder block 气缸体



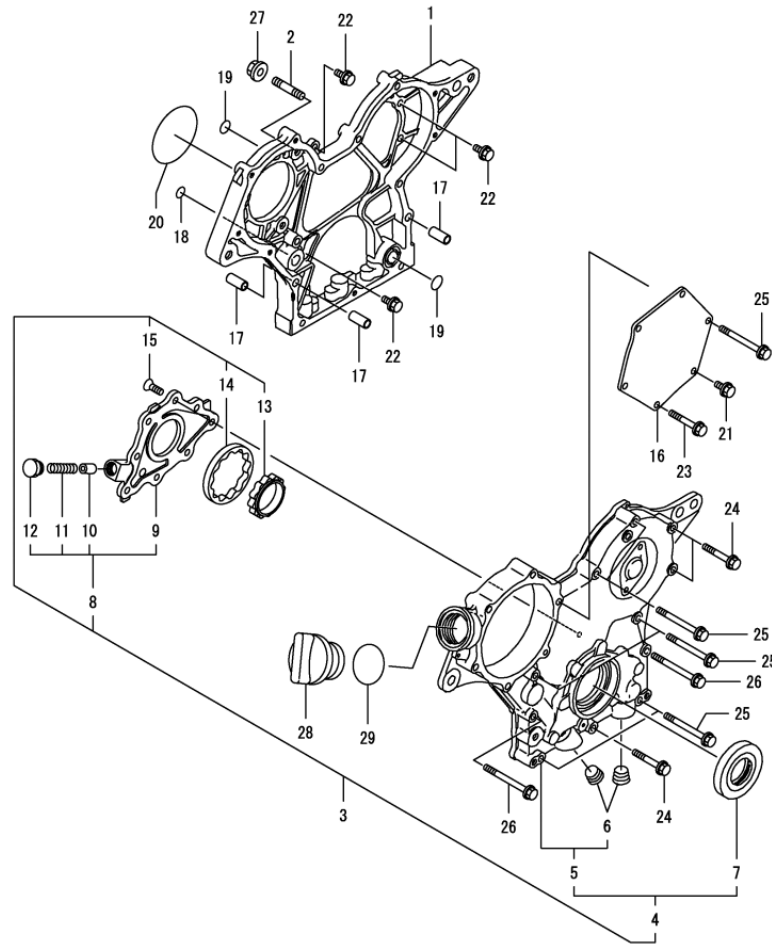
0CD50-M04470 Fig.1

(A)=3TNV80F-SPSY2
(B)=
(C)=

(D)=
(E)=
(F)=

No.	Lev.	Parts No.	Description	Qty						I	R
				(A)	(B)	(C)	(D)	(E)	(F)		
1	1	119E00-01560	BLOCKASSY, CYLINDER	1							
4	2	105311-01090	PLUG, 30	4							
5	2	119623-01250	PLUG, 45	1							
6	2	119285-01990	PLUG, 25	3							
7	2	119620-02020	BOLT, METAL CAP	8							
10	2	119717-02411	BUSH, CAMSHAFT	1							
11	2	124060-01050	PLUG, PT1/8	1							
12	2	124160-01910	PLUG, PT1/4	1							
13	2	27241-120000	PLUG, 12	1							
23	2	119717-02930	METAL ASSY, THRUST	2							
26	1	119810-01200	BOLT, CYLINDER HEAD	14							
27	1	119E10-01330	GASKET SET, HEAD	1							
28	1	719717-02901	METAL ASSY, MAIN	4							1
31	1	719717-02911	METAL ASSY, MAIN .25	4							2
34	1	119810-02941	METAL ASSY, 0.25 OS	2							3

2.71.1.2 Gear housing 齿轮箱



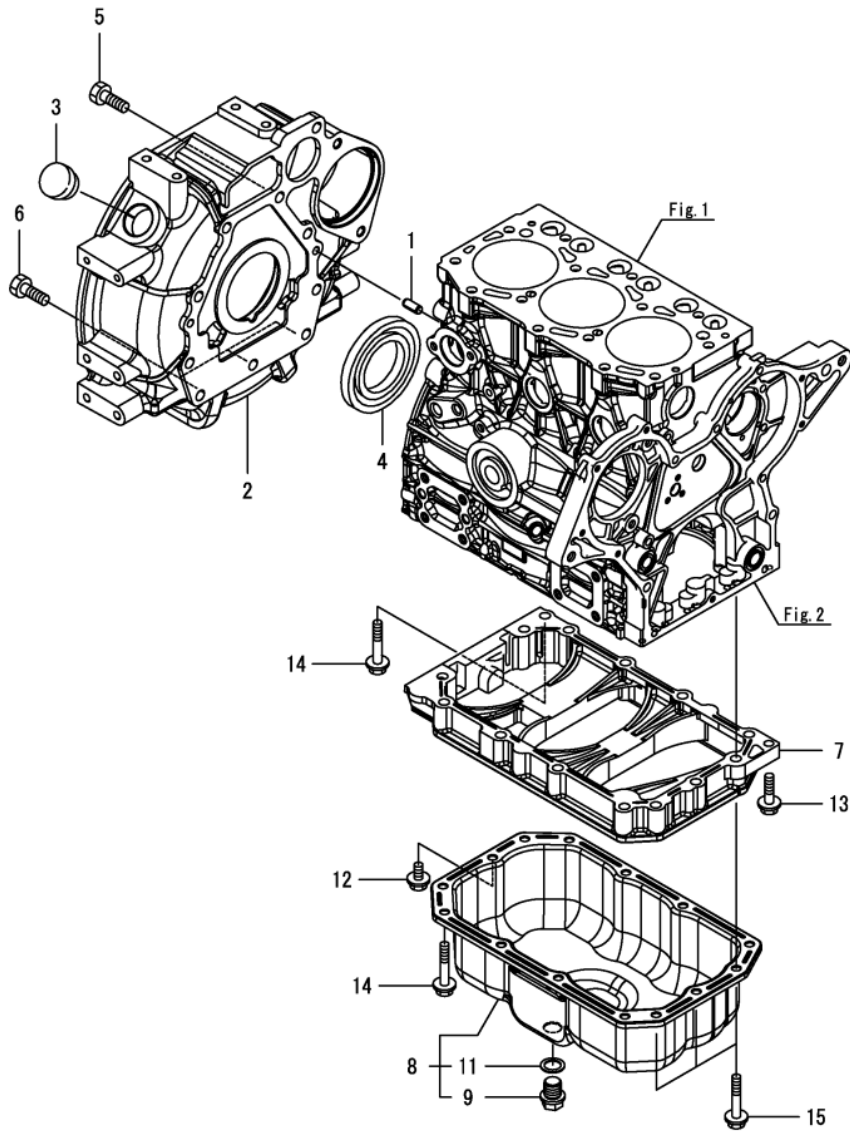
OCD50-M04470 Fig.2

(A)=3TNV80F-SPSY2
(B)=
(C)=

(D)=
(E)=
(F)=

No.	Lev.	Parts No.	Description	Qty						I	R
				(A)	(B)	(C)	(D)	(E)	(F)		
1	1	119717-01501	CASE, GEAR	1							
2	1	119717-01570	STUD	3							
3	1	119734-01590	COVER ASSY, CASE	1							
4	2	719734-01500	COVER ASSY, CASE	1							
5	3	119717-01521	COVER, GEAR CASE	1							
6	4	23876-030000	PLUG, R03	2							
7	3	119717-01800	SEAL, OIL	1							
8	2	119717-32100	COVER ASSY, PUMP	1							
9	3	119717-32080	COVER, OIL PUMP	1							
10	3	129900-32130	VALVE, RELIEF	1							
11	3	129001-32320	SPRING	1							
12	3	129001-32330	PLUG	1							
13	2	119717-32110	ROTOR, INNER	1							
14	2	119717-32120	ROTOR, OUTER	1							
15	2	119802-32130	SCREW, M6X16	8							
16	1	119717-01750	COVER, PUMP	1							
17	1	119660-01911	PIPE, KNOCK 6X17	4							
18	1	119624-32040	O-RING, P12.0	1							
19	1	119717-32050	O-RING, P17.0	3							
20	1	121850-51960	O-RING, FUEL PUMP	1							
21	1	26106-060122	BOLT, M6X 12 PLATED	1							
22	1	26106-060162	BOLT, M6X 16 PLATED	4							
23	1	26106-060402	BOLT, M6X 40 PLATED	4							
24	1	26106-060402	BOLT, M6X 40 PLATED	3							
25	1	26106-060602	BOLT, M6X 60 PLATED	7							
26	1	26106-060652	BOLT, M6X 65 PLATED	2							
27	1	26306-080002	NUT, M8	3							
28	1	124160-01751	CAP, FILLER	1							
29	1	24311-000320	O-RING, 1AP32.0	1							

2.71.1.3 Flywheel housing & oil sump 飞轮壳和油底壳



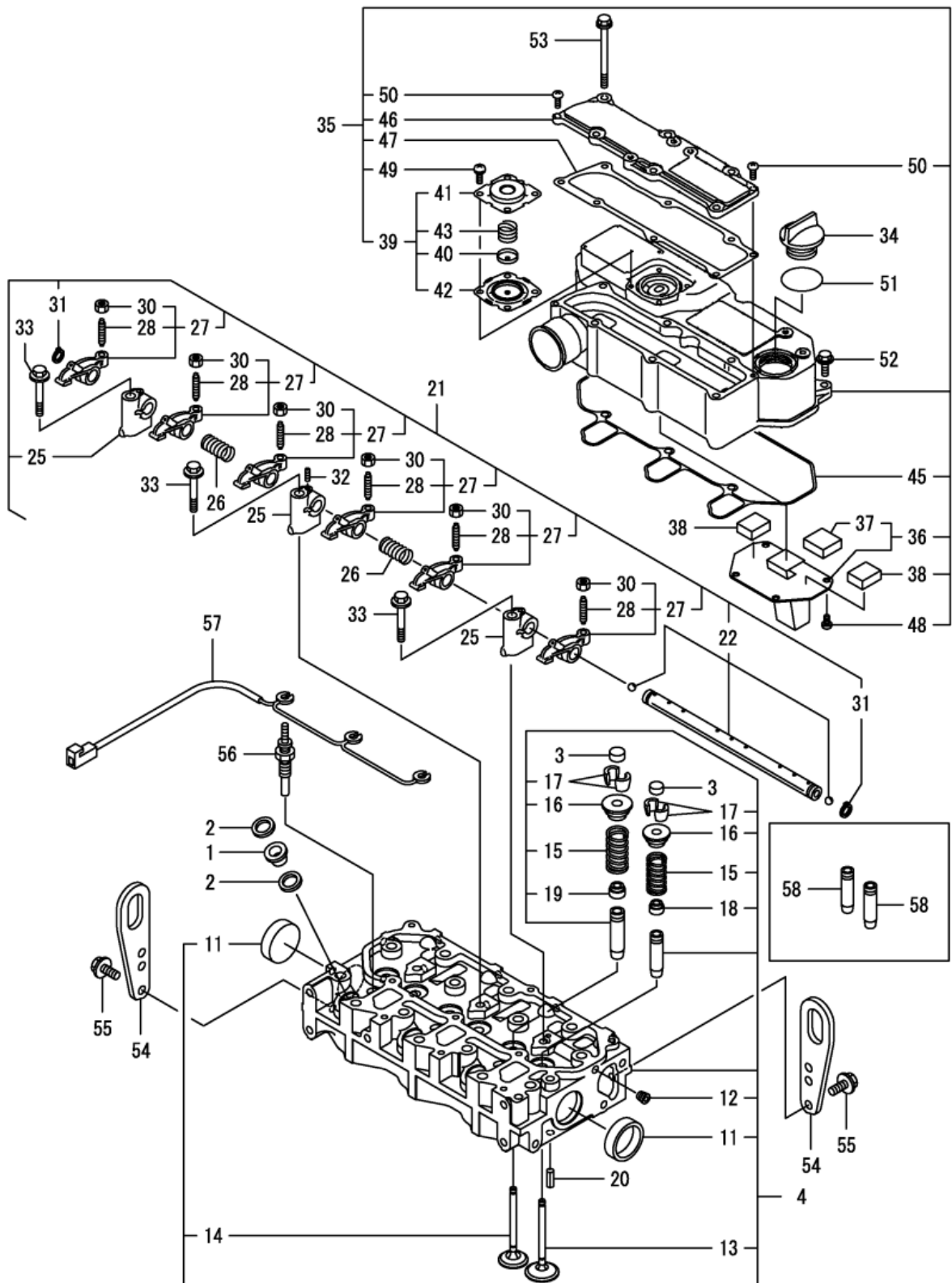
0CD50-M04470 Fig.3

(A)=3TNV80F-SPSY2
(B)=
(C)=

(D)=
(E)=
(F)=

No.	Lev.	Parts No.	Description	Q'ty						I	R
				(A)	(B)	(C)	(D)	(E)	(F)		
1	1	129100-01580	PIN, PARALLEL 8X16	2							
2	1	119515-01601	HOUSING, FLYWHEEL	1							
3	1	119620-01750	CAP, WHEEL COVER	1							
4	1	119734-02220	SEAL, OIL WHEEL SIDE	1							
5	1	26206-100252	BOLT, M10X 25 PLATED	7							
6	1	26206-100302	BOLT, M10X 30 PLATED	3							
7	1	119717-01720	SPACER, OIL PAN	1							
8	1	119740-01770	OIL PAN ASSY	1							
9	2	105425-01690	PLUG, DRAIN M16	1							
11	2	22190-160002	WASHER, SEAL 16	1							
12	1	26106-080122	BOLT, M8X 12 PLATED	1							
13	1	26106-080302	BOLT, M8X 30 PLATED	1							
14	1	26106-080452	BOLT, M8X 45 PLATED	11							
15	1	26106-080502	BOLT, M8X 50 PLATED	3							

2.71.1.4 Cylinder head & bonnet 气缸盖和阀盖



2.71.1.4 Cylinder head & bonnet 气缸盖和阀盖

0CD50-M04470 Fig.4

(A)=3TNNV80F-SPSY2

(D)=

(B)=

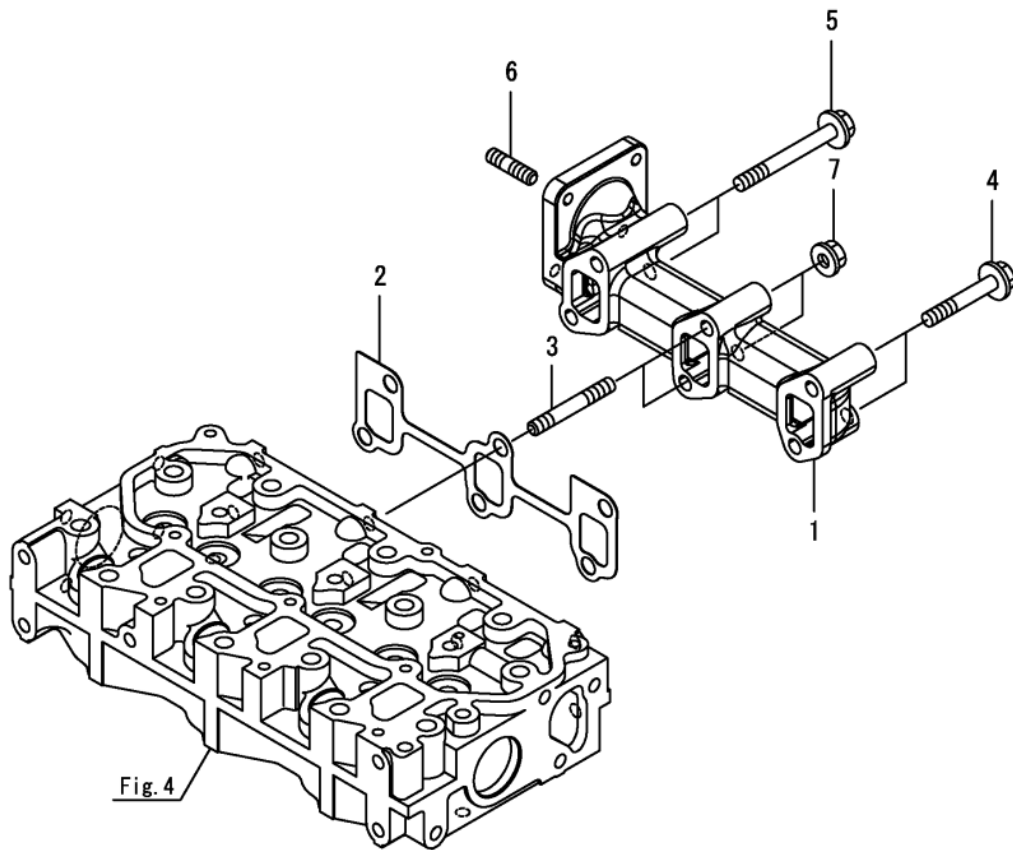
(E)=

(C)=

(F)=

No.	Lev.	Parts No.	Description	Q'ty						I	R
				(A)	(B)	(C)	(D)	(E)	(F)		
1	1	129901-11450	PROTECTOR, NOZZLE	3							
2	1	119600-11460	GASKET, NOZZLE	6							
3	1	105010-11490	CAP, VALVE	6							
4	1	119E10-11740	HEAD ASSY, CYLINDER	1							
11	2	119285-11990	PLUG, 35	2							
12	2	23876-005000	PLUG, R005	1							
13	2	119E10-11100	VALVE, INTAKE	3							
14	2	119E10-11110	VALVE, EXHAUST	3							
15	2	119717-11131	SPRING, VALVE	6							
16	2	129508-11180	RETAINER, SPRING	6							
17	2	119717-11190	COTTER, VALVE	12							
18	2	119717-11340	SEAL, VALVE STEM	3							
19	2	119717-11350	SEAL, VALVE STEM	3							
20	1	22351-060012	PIN, SPRING 6.0X12	2							
21	1	119717-11200	SUPPORT ASSY, ROCKER	1							
22	2	119717-11240	SHAFT ASSY, ARM	1							
25	2	119717-11260	SUPPORT, ROCKER ARM	3							
26	2	119620-11280	SPRING, SHAFT	2							
27	2	119717-11650	ARM ASSY, ROCKER INT	6							
28	3	129150-11230	SCREW, VALVE ADJUST	6							
30	3	129150-11750	NUT, M8XP1.0	6							
31	2	22242-000120	RING, 12	2							
32	2	26979-050162	SCREW, M5X16	1							
33	1	26106-080402	BOLT, M8X 40 PLATED	3							
34	1	124160-01751	CAP, FILLER	1							
35	1	119717-11381	BONNET ASSY, HEAD	1							
36	2	119717-03031	PLATE, BAFFLE	1							
37	3	119717-03070	BAFFLE, BREATHER	1							
38	2	119717-03070	BAFFLE, BREATHER	2							
39	2	119802-03100	DIAPHRAGM ASSY	1							
40	3	119802-03110	PLATE, DIAPHRAGM	1							
41	3	119802-03121	COVER, DIAPHRAGM	1							
42	3	119802-03131	DIAPHRAGM, BREATHER	1							
43	3	119802-03141	SPRING, DIAPHRAGM	1							
45	2	119718-11310	GASKET, BONNET	1							
46	2	119717-11320	COVER, BONNET	1							
47	2	119717-11331	GASKET, BONNET COVER	1							
48	2	22857-500100	SCREW, 5X10	4							
49	2	22857-500100	SCREW, 5X10	4							
50	2	22857-500160	SCREW, 5X16	2							
51	1	24311-000320	O-RING, 1AP32.0	1							
52	1	26106-060202	BOLT, M6X 20 PLATED	3							
53	1	26106-060752	BOLT, M6X 75 PLATED	6							
54	1	119226-07900	LIFTER, ENGINE	2							
55	1	26106-080162	BOLT, M8X 16 PLATED	4							
56	1	119717-77801	PLUG, GLOW	3							
57	1	119717-77820	CONNECTOR, GLOW PLUG	1							
58	1	119717-11800	GUIDE, VALVE	6							1

2.71.1.5 Exhaust manifold 排气歧管



OCD50-M04470 Fig.5

(A)=3TNV80F-SPSY2

(B)=

(C)=

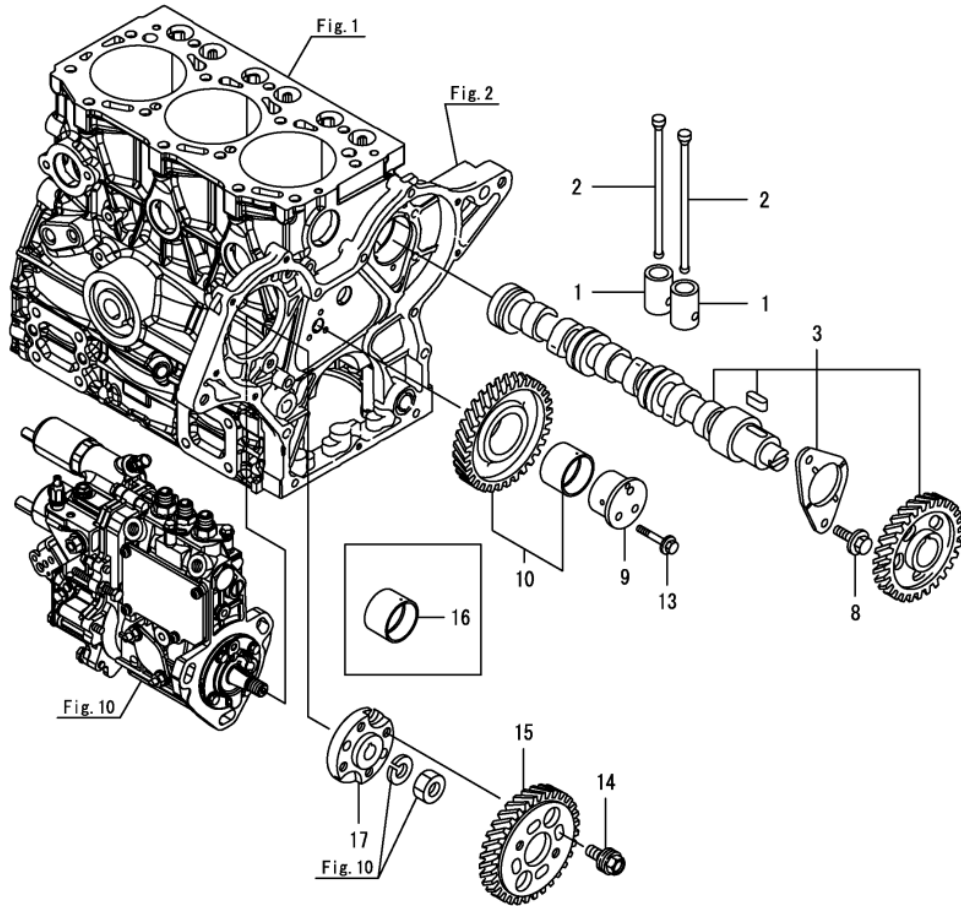
(D)=

(E)=

(F)=

No.	Lev.	Parts No.	Description	Q'ty						I	R
				(A)	(B)	(C)	(D)	(E)	(F)		
1	1	119740-13100	MANIFOLD, EXHAUST	1							
2	1	119717-13110	GASKET, MANIFOLD	1							
3	1	119717-13600	STUD, M8X50	2							
4	1	129E00-13610	BOLT, M8X50 10.9	2							
5	1	129E00-13630	BOLT, M8X71 10.9T	2							
6	1	119131-18320	STUD, M8X22	4							
7	1	26306-080002	NUT, M8	2							

2.71.1.6 Camshaft & driving gear 凸轮轴和传动齿轮



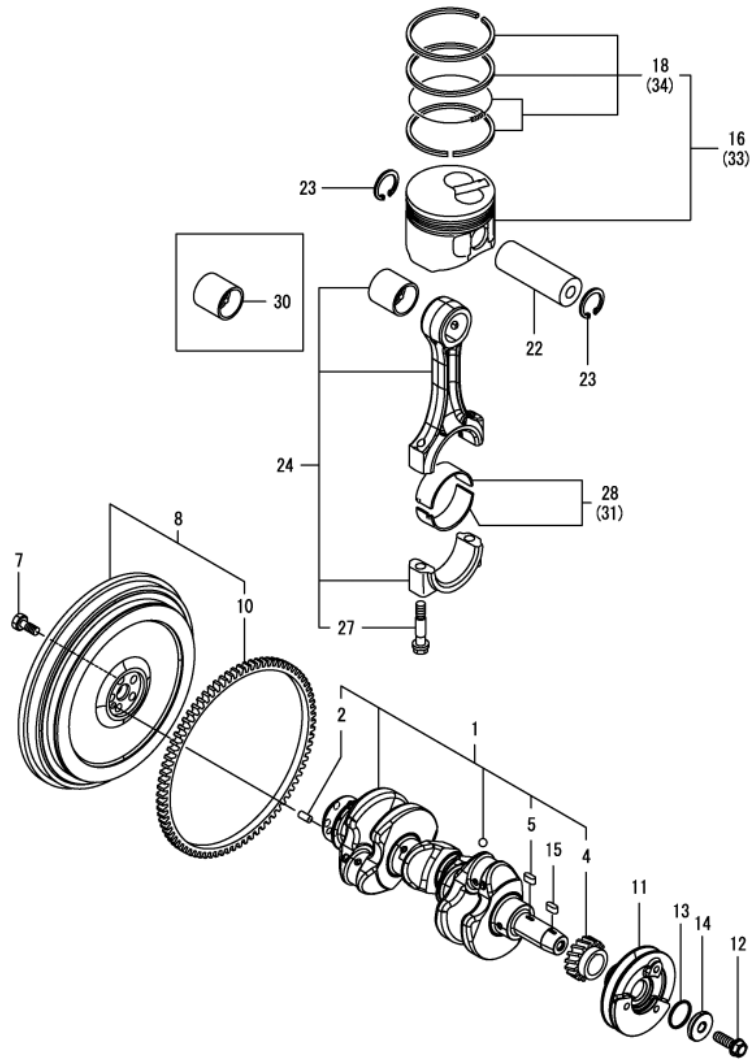
OCD50-M04470 Fig.6

(A)=3TNV80F-SPSY2
(B)=
(C)=

(D)=
(E)=
(F)=

No.	Lev.	Parts No.	Description	Q'ty						I	R
				(A)	(B)	(C)	(D)	(E)	(F)		
1	1	119620-14200	TAPPET	6							
2	1	119717-14400	ROD, PUSH	6							
3	1	119717-14581	CAMSHAFT ASSY	1							
8	1	26106-060122	BOLT, M6X 12 PLATED	2							
9	1	119717-25050	SHAFT, IDLE GEAR	1							
10	1	119717-25101	GEAR ASSY, IDLE	1							
13	1	26106-060352	BOLT, M6X 35 PLATED	3							
14	1	129150-25301	BOLT, INJECTION PUMP	4							
15	1	119717-25930	GEAR, PUMP	1							
16	1	119717-25911	BUSH, IDLE GEAR	1							1
17	1	119717-51150	FLANGE, CAMSHAFT	1							

2.71.1.7 Crankshaft & piston 曲轴和活塞



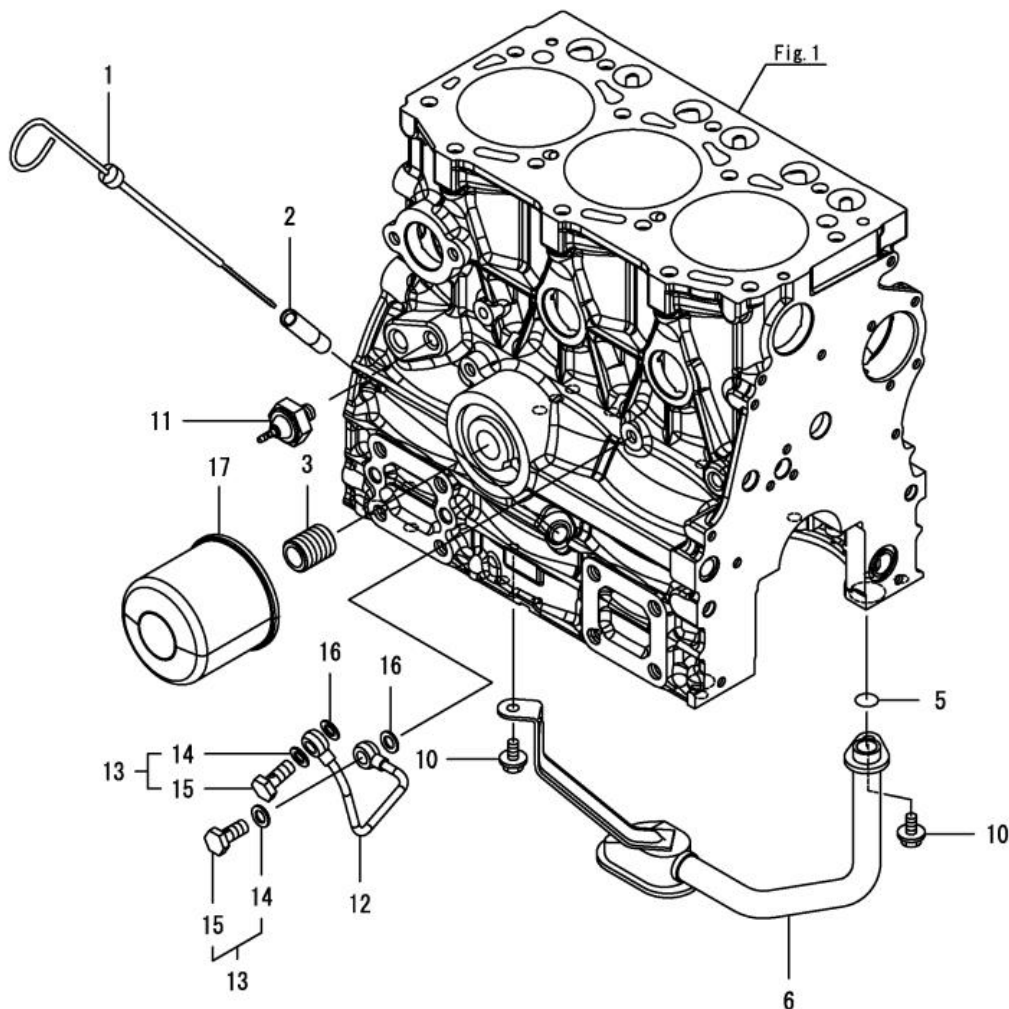
OCD50-M04470 Fig.7

(A)=3TNV80F-SPSY2
(B)=
(C)=

(D)=
(E)=
(F)=

No.	Lev.	Parts No.	Description	Q'ty						I	R
				(A)	(B)	(C)	(D)	(E)	(F)		
1	1	119E10-21700	CRANKSHAFT ASSY	1							
2	2	129100-01580	PIN, PARALLEL 8X16	1							
4	2	119717-21200	GEAR, CRANKSHAFT	1							
5	2	22512-040120	KEY, 4X 12	1							
7	1	119620-21500	BOLT, FLYWHEEL	5							
8	1	119C10-21590	FLYWHEEL ASSY	1							
10	2	124950-21600	GEAR, RING Z=97	1							
11	1	119C10-21650	V-PULLEY, CRANKSHAFT	1							
12	1	119621-21681	BOLT, FLANGE 12X1.25	1							
13	1	119C10-21931	PACKING, WASHER	1							
14	1	119C10-21940	WASHER, V-PULLEY	1							
15	1	22512-040120	KEY, 4X 12	1							
16	1	119E11-22080	PISTON ASSY	3							
18	2	119E10-22500	RING SET, PISTON	3							
22	1	119E10-22300	PIN, PISTON	3							
23	1	22252-000220	RING, 22	6							
24	1	119E10-23001	ROD ASSY, CONNECTING	3							
27	2	119717-23200	BOLT, CONNECTING ROD	6							
28	1	119717-23601	METAL ASSY,CRANK PIN	3							
30	1	119717-23911	BUSH, PISTON PIN	3							1
31	1	119717-23611	METAL ASSY, PIN .25	3							2
33	1	119E11-22900	PISTON ASSY, 0.25 OS	3							3
34	2	119E10-22550	RING SET, PISTON .25	3							3

2.71.1.8 Lub. oil system 润滑系统



OCD50-M04470 Fig.8

(A)=3TNV80F-SPSY2

(B)=

(C)=

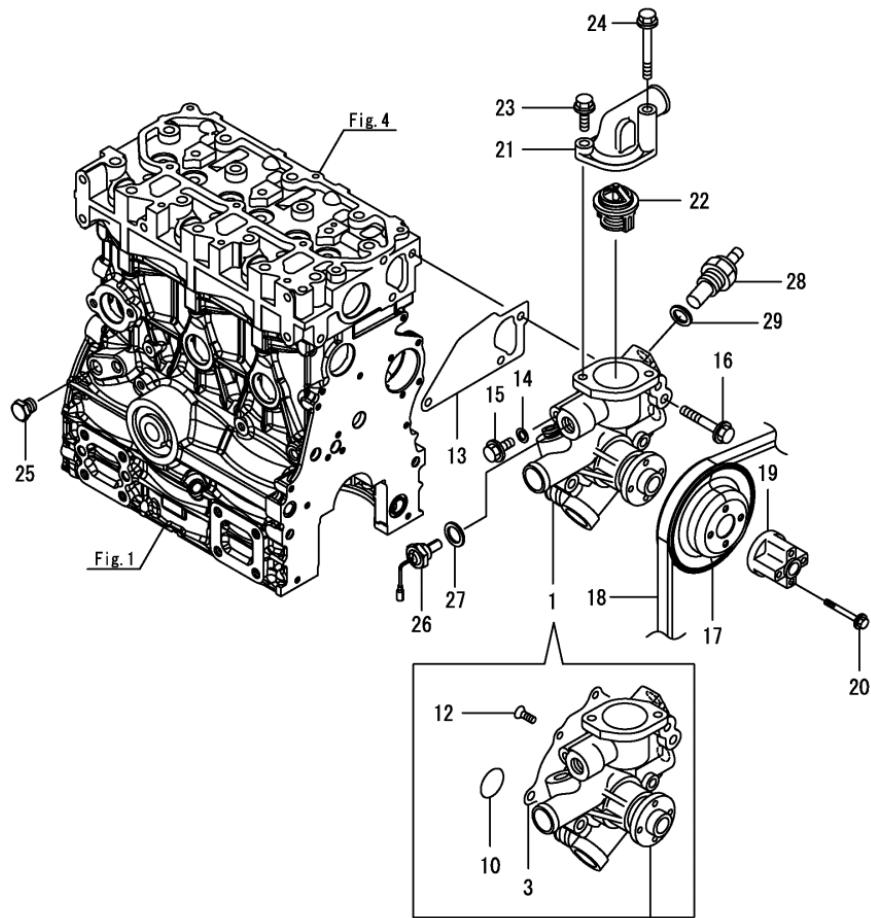
(D)=

(E)=

(F)=

No.	Lev.	Parts No.	Description	Qty						I	R
				(A)	(B)	(C)	(D)	(E)	(F)		
1	1	119717-34801	DIPSTICK, OIL	1							
2	1	121520-34810	GUIDE, DIPSTICK	1							
3	1	119717-35140	STUD	1							
5	1	119717-32060	O-RING, P15.0	1							
6	1	119717-35080	PIPE ASSY, OIL INLET	1							
10	1	26106-060102	BOLT, M6X 10 PLATED	2							
11	1	114250-39450	SWITCH, HYDRAULIC	1							
12	1	119717-39210	PIPE, PUMP	1							
13	1	129005-59830	BOLT ASSY, JOINT M8	2							
14	2	22190-080002	WASHER, SEAL 8	2							
15	2	23857-030000	BOLT, JOINT 3	2							
16	1	22190-080002	WASHER, SEAL 8	2							
17	1	119305-35151	FILTER ASSY, D68XL65	1							1

2.71.1.9 Cooling water system 冷却系统



0CD50-M04470 Fig.9

(A)=3TNV80F-SPSY2

(B)=

(C)=

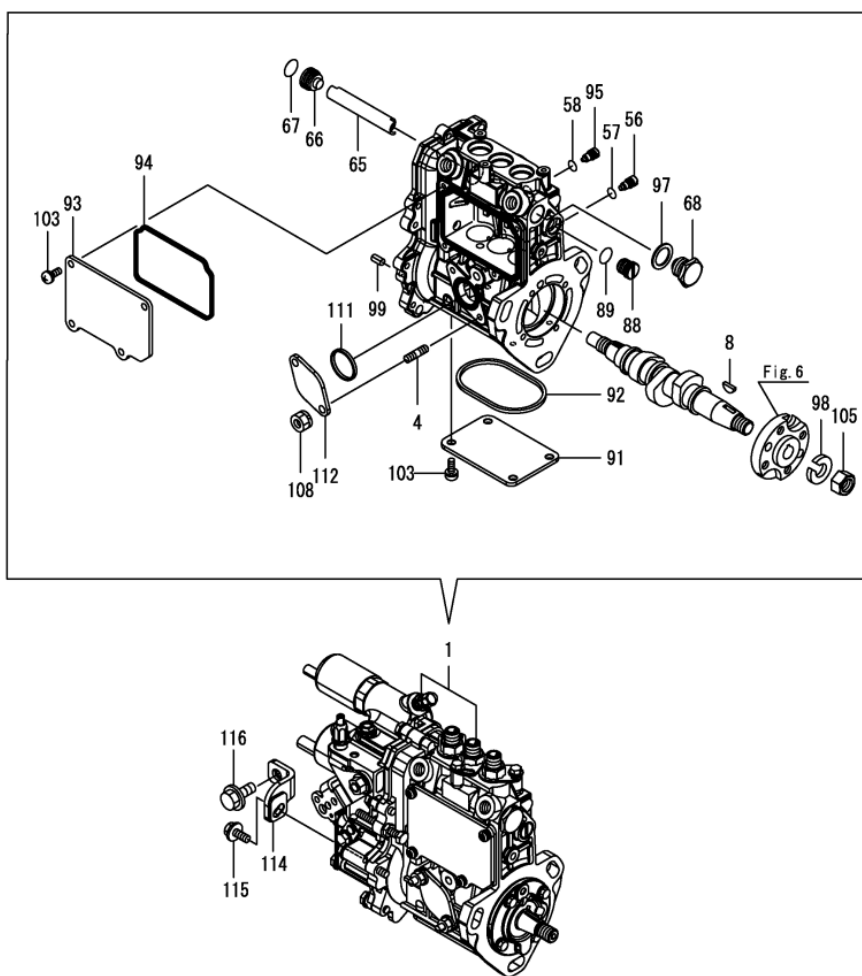
(D)=

(E)=

(F)=

No.	Lev.	Parts No.	Description	Q'ty						I	R
				(A)	(B)	(C)	(D)	(E)	(F)		
1	1	119E10-42001	PUMP ASSY, CW	1							
3	2	119717-42031	GASKET, WATER PUMP	1							
10	2	119C10-42320	O-RING, 2028	1							
12	2	26577-060122	SCREW, M6X12	4							
13	1	119717-42020	GASKET, WATER PUMP	1							
14	1	23414-080000	GASKET, 8X1.0	1							
15	1	26106-080122	BOLT, M8X 12 PLATED	1							
16	1	26106-080502	BOLT, M8X 50 PLATED	3							
17	1	119515-42350	V-PULLEY, PUMP D110	1							
18	1	129258-42290	V-BELT, A36.5	1							
19	1	119256-44760	SPACER, FAN	1							
20	1	26106-060552	BOLT, M6X 55 PLATED	4							
21	1	124101-49531	COVER, THERMOSTAT	1							
22	1	119717-49800	THERMOSTAT, 71C	1							
23	1	26106-080282	BOLT, M8X 28 PLATED	1							
24	1	26106-080652	BOLT, M8X 65 PLATED	1							
25	1	171056-49120	PLUG, DRAIN R1/4	1							
26	1	129107-44901	SENSOR, WATER TEMP.	1							
27	1	124465-44950	GASKET, 16	1							
28	1	124250-49351	SENSOR, WATER TEMP.	1							
29	1	129150-49360	GASKET, 10	1							

2.71.1.10 Fuel injection pump 燃油泵



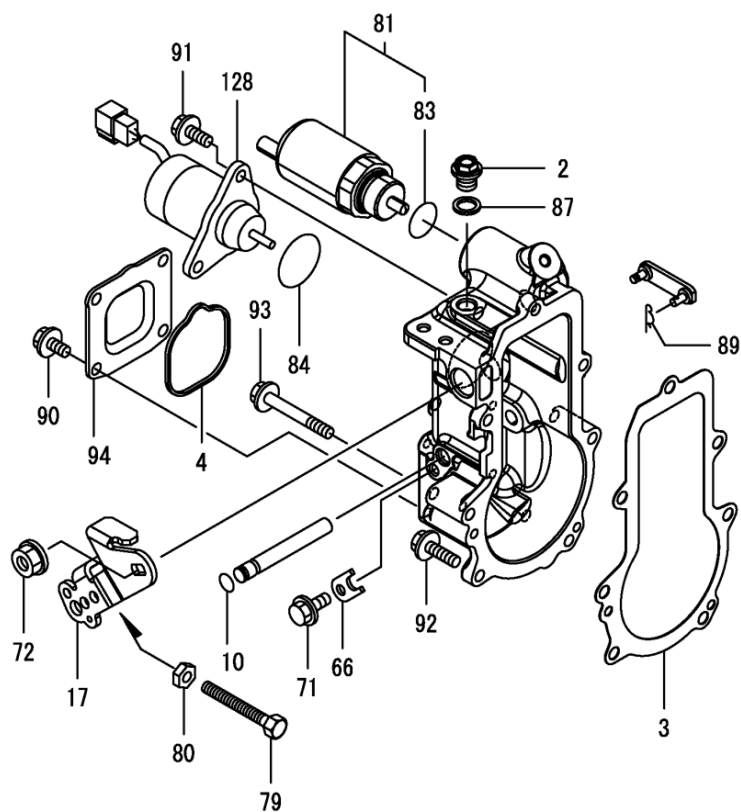
OCD50-M04470 Fig.10

(A)=3TNV80F-SPSY2
(B)=
(C)=

(D)=
(E)=
(F)=

No.	Lev.	Parts No.	Description	Q'ty						I	R
				(A)	(B)	(C)	(D)	(E)	(F)		
1	1	719E40-51450	FIE ASSY	1							1
4	2	129155-51020	STUD	2							
8	2	122710-51090	KEY, FEATHER	1							
56	2	158600-51270	STOPPER, TAPPET	3							
57	2	129155-51280	O-RING, S6	3							
58	2	129155-51280	O-RING, S6	1							
65	2	129155-51400	PROTECTOR	1							
66	2	158600-51410	PLUG, DEFLIFTER M12	1							
67	2	119717-51420	O-RING	1							
68	2	158600-51420	PLUG, DEFLIFTER M16	1							
88	2	158600-51570	PLUG, RACK	1							
89	2	129155-51580	O-RING	1							
91	2	129155-51701	COVER, PUMP BOTTOM	1							
92	2	119717-51711	GASKET, PUMP	1							
93	2	119717-51750	COVER, BODY SIDE	1							
94	2	119717-51761	GASKET, PUMP COVER	1							
95	2	158600-51790	STOPPER, RACK	1							
97	2	22190-160002	WASHER, SEAL 16	1							
98	2	22217-120000	WASHER, SPRING 12	1							
99	2	22351-050010	PIN, SPRING 5.0X10	2							
103	2	26022-050122	SCREW, M5X12	8							
105	2	26716-120002	NUT, M12	1							
108	2	119717-51860	NUT, M6	2							
111	2	129155-52051	GASKET, PUMP COVER	1							
112	2	129100-52200	COVER, FEED PUMP	1							
114	1	119E10-51250	SUPPORT	1							
115	1	26106-060162	BOLT, M6X 16 PLATED	1							
116	1	26106-080162	BOLT, M8X 16 PLATED	1							

2.71.1.11 Governor 调速器



OCD50-M04470 Fig.11

(A)=3TNV80F-SPSY2

(B)=

(C)=

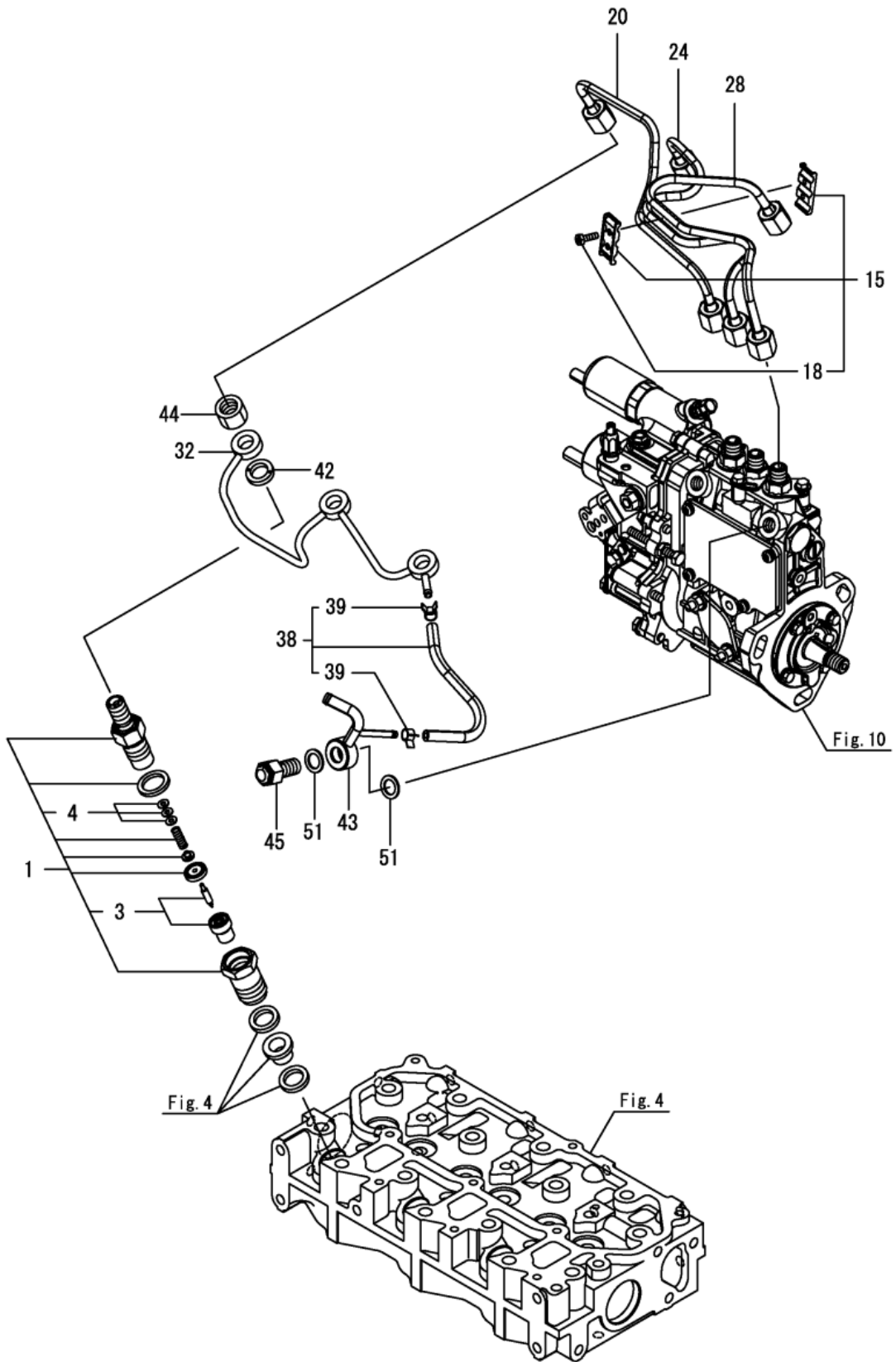
(D)=

(E)=

(F)=

No.	Lev.	Parts No.	Description	Q'ty						I	R
				(A)	(B)	(C)	(D)	(E)	(F)		
2	2	119717-51930	PLUG, M10	1							
3	2	119717-61050	GASKET, CASE	1							
4	2	119717-61070	GASKET, COVER	1							
10	2	129155-51280	O-RING, S6	1							
17	2	119515-61440	LEVER, CONTROL	1							
66	2	119660-61901	STOPPER, SHAFT	1							
71	2	26106-060102	BOLT, M6X 10 PLATED	1							
72	2	26366-080002	NUT, M8	1							
79	2	129155-61461	BOLT, IDLE LIMIT	1							
80	2	119740-61470	NUT	1							
81	2	119C00-61900	SOLENOID, CONTROL	1							
83	3	24357-240200	PACKING, 24020	1							
84	2	158552-61900	O-RING	1							
87	2	22190-100002	WASHER, SEAL 10	1							
89	2	22372-040000	PIN, SNAP 4	1							
90	2	26106-060102	BOLT, M6X 10 PLATED	4							
91	2	26106-060142	BOLT, M6X 14 PLATED	2							
92	2	26106-060202	BOLT, M6X 20 PLATED	4							
93	2	26106-060452	BOLT, M6X 45 PLATED	3							
94	2	119717-61060	COVER, GOVERNOR CASE	1							
128	2	129630-77900	SOLENOID, STOP	1							

2.71.1.12 Fuel injection valve 喷油阀



2.71.1.12 Fuel injection valve 喷油阀

0CD50-M04470 Fig.12

(A)=3TNV80F-SPSY2

(B)=

(C)=

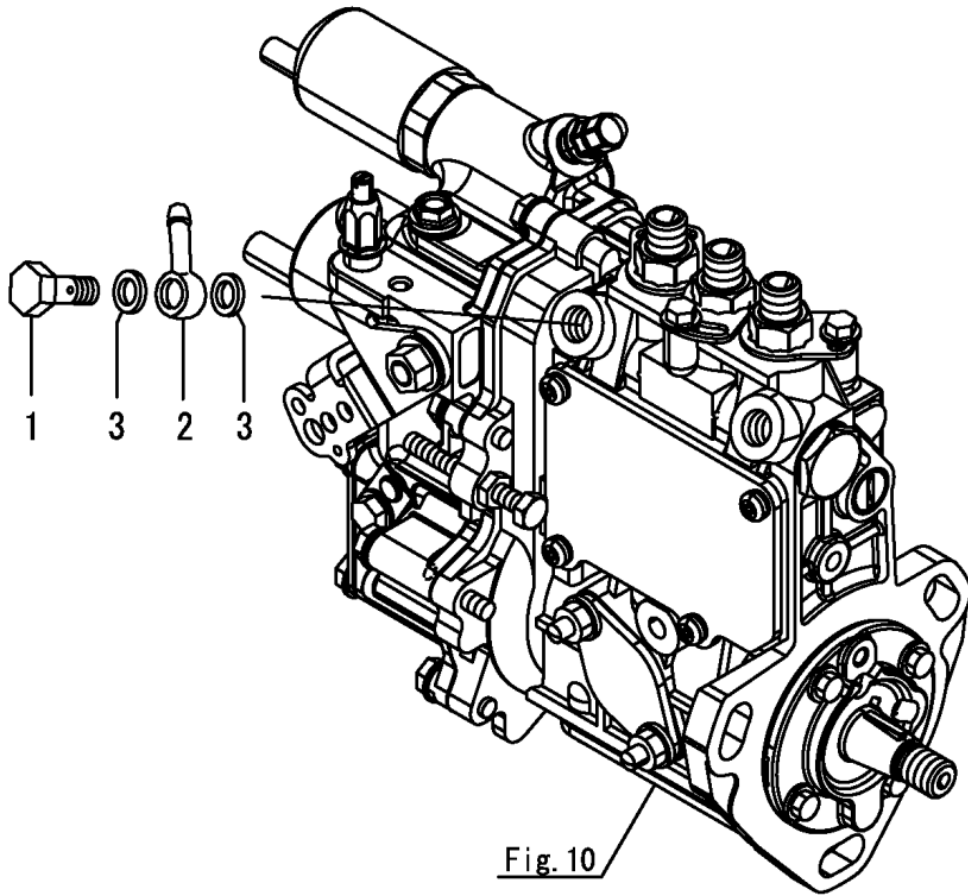
(D)=

(E)=

(F)=

No.	Lev.	Parts No.	Description	Qty						I	R
				(A)	(B)	(C)	(D)	(E)	(F)		
1	1	119C10-53000	VALVE ASSY,INJECTION	3							
3	2	119C10-53010	VALVE ASSY,INJECTION	3							
4	2	129901-53800	SHIM SET, ADJUSTING	3							1
15	1	129150-59120	RETAINER, PIPE	1							
18	2	129150-59131	BOLT, M4X14	2							
20	1	119E10-59810	PIPE ASSY, INJECTION	1							
24	1	119E10-59820	PIPE, INJECTION NO.2	1							
28	1	119E10-59830	PIPE, INJECTION NO.3	1							
32	1	119717-59510	PIPE ASSY, RETURN	1							
38	1	119744-59560	HOSE ASSY, RETURN	1							
39	2	124066-59100	CLAMP, HOSE 8	2							
42	1	129901-59560	GASKET, FUEL RETURN	3							
43	1	119515-59581	JOINT, OVERFLOW	1							
44	1	119620-59700	NUT, NOZZLE RETURN	3							
45	1	119813-59950	VALVE ASSY, CHECK	1							
51	1	22190-120002	WASHER, SEAL 12	2							

2.71.1.13 Fuel pipe 燃油管



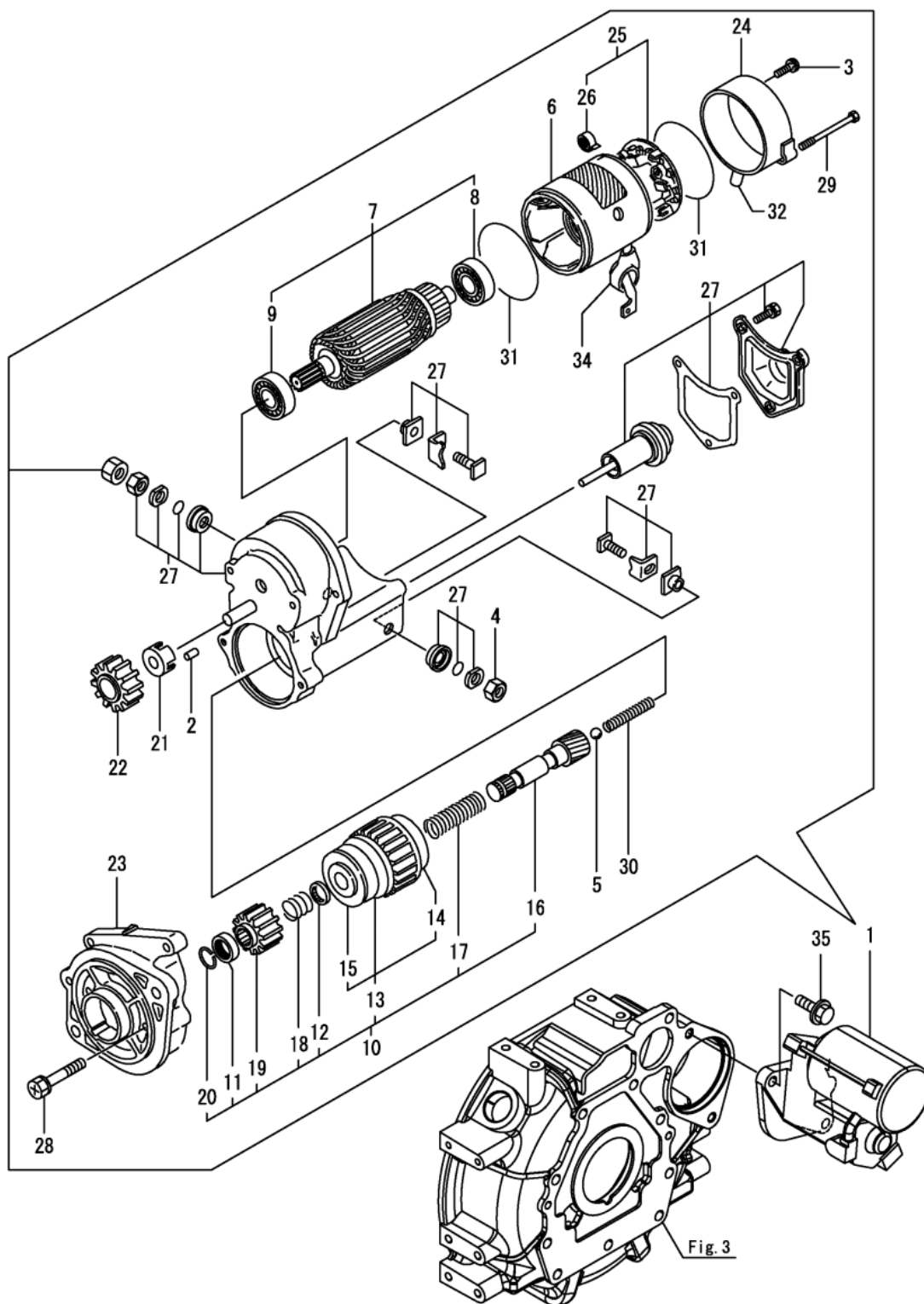
0CD50-M04470 Fig.13

(A)=3TNV80F-SPSY2
(B)=
(C)=

(D)=
(E)=
(F)=

No.	Lev.	Parts No.	Description	Q'ty						I	R
				(A)	(B)	(C)	(D)	(E)	(F)		
1	1	103854-39140	BOLT, PIPE JOINT	1							
2	1	101304-59020	JOINT, PIPE 12	1							
3	1	22190-120002	WASHER, SEAL 12	2							

2.71.1.14 Starter motor 启动马达



2.71.1.14 Starter motor 启动马达

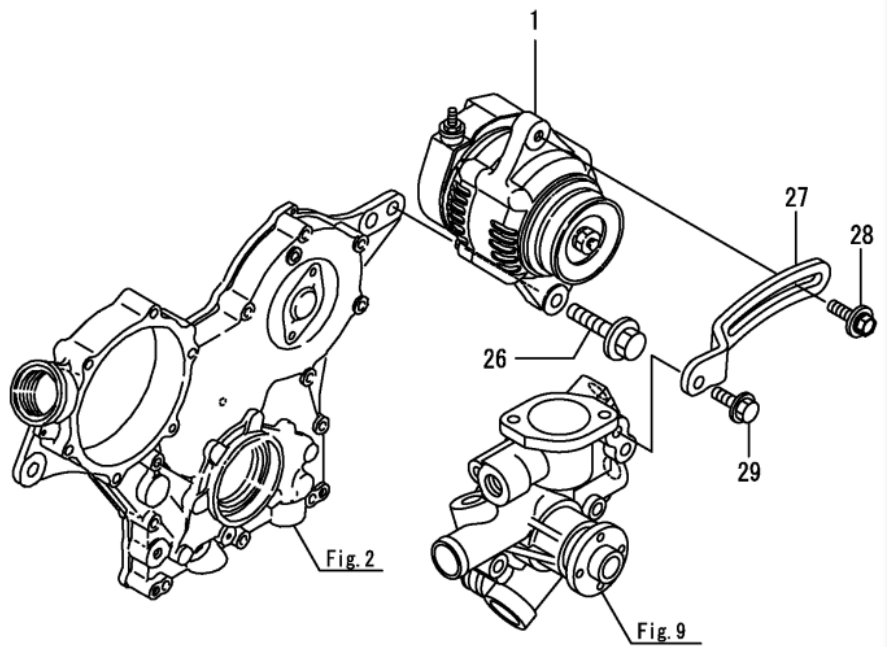
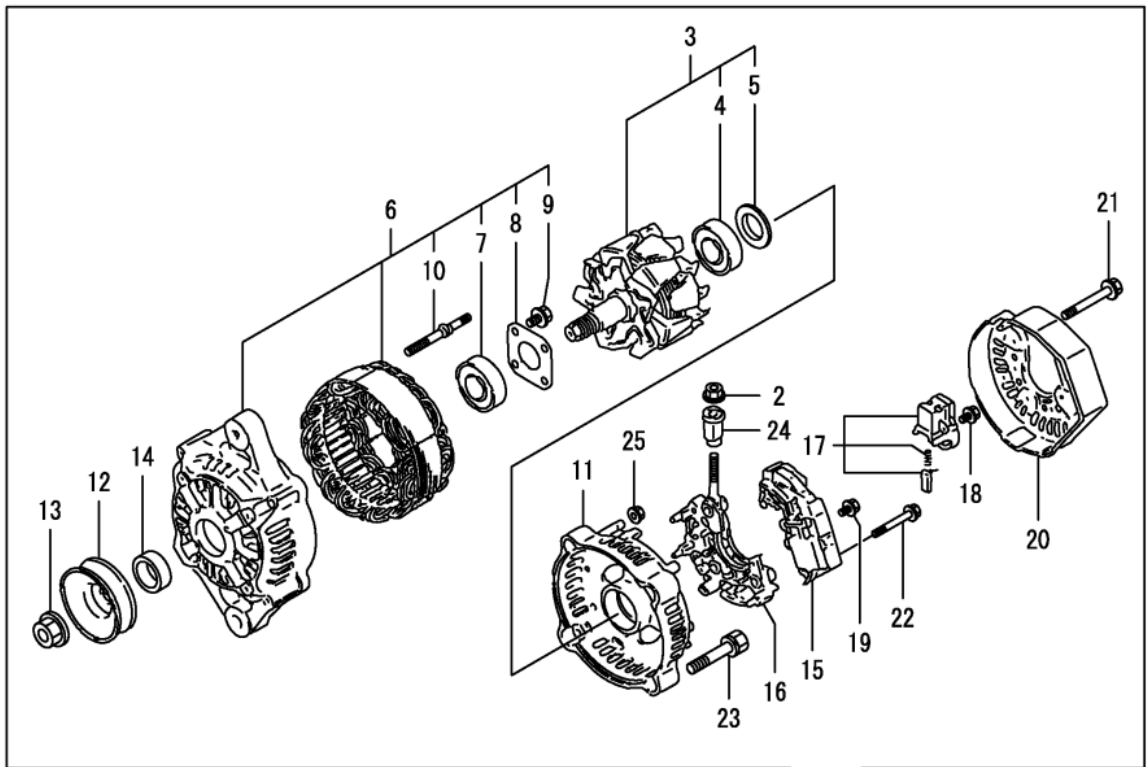
0CD50-M04470 Fig.14

(A)=3TNV80F-SPSY2
(B)=
(C)=

(D)=
(E)=
(F)=

No.	Lev.	Parts No.	Description	Q'ty						I	R
				(A)	(B)	(C)	(D)	(E)	(F)		
1	1	119740-77020	STARTER, RA1.4	1							
2	2	X0283060061	ROLLER	5							
3	2	129129-77460	SCREW	2							
4	2	X9490561370	NUT	1							
5	2	X9491200240	BALL, STEEL	1							
6	2	129407-77210	YOKE ASSY	1							
7	2	129407-77220	ARMATURE ASSY	1							
8	3	129129-77230	BEARING, BALL	1							
9	3	129129-77240	BEARING, BALL	1							
10	2	X1280996600	STARTER KIT	1							
11	3	X0280210230	NUT, PINION STOP	1							
12	3	X0283270140	RETAINER, SNAP	1							
13	3	129129-77390	CLUTCH ASSY, STARTER	1							
14	4	129129-77440	BEARING, BALL	1							
15	4	129129-77450	BEARING, BALL	1							
16	3	129129-77400	SHAFT, STARTER	1							
17	3	129129-77410	SPRING, COIL	1							
18	3	129407-77410	SPRING, COIL	1							
19	3	X0283712350	PINION, STARTER	1							
20	3	129129-77430	RING, SNAP	1							
21	2	129129-77260	RETAINER	1							
22	2	129129-77270	PINION	1							
23	2	X4284003310	HOUSING	1							
24	2	129407-77290	FRAME	1							
25	2	129407-77300	HOLDER ASSY	1							
26	3	X9491730461	SPRING, BRUSH	4							
27	2	X1534004151	SWITCH ASSY	1							
28	2	129129-77320	BOLT, WWASHER	2							
29	2	129407-77330	BOLT	2							
30	2	129129-77340	SPRING	1							
31	2	129129-77350	O-RING	2							
32	2	129129-77362	COVER	1							
34	2	129129-77380	CAP	1							
35	1	26106-100252	BOLT, M10X 25 PLATED	2							

2.71.1.15 Generator 发电机



2.71.1.15 Generator 发电机

0CD50-M04470 Fig.15

(A)=3TNV80F-SPSY2

(B)=

(C)=

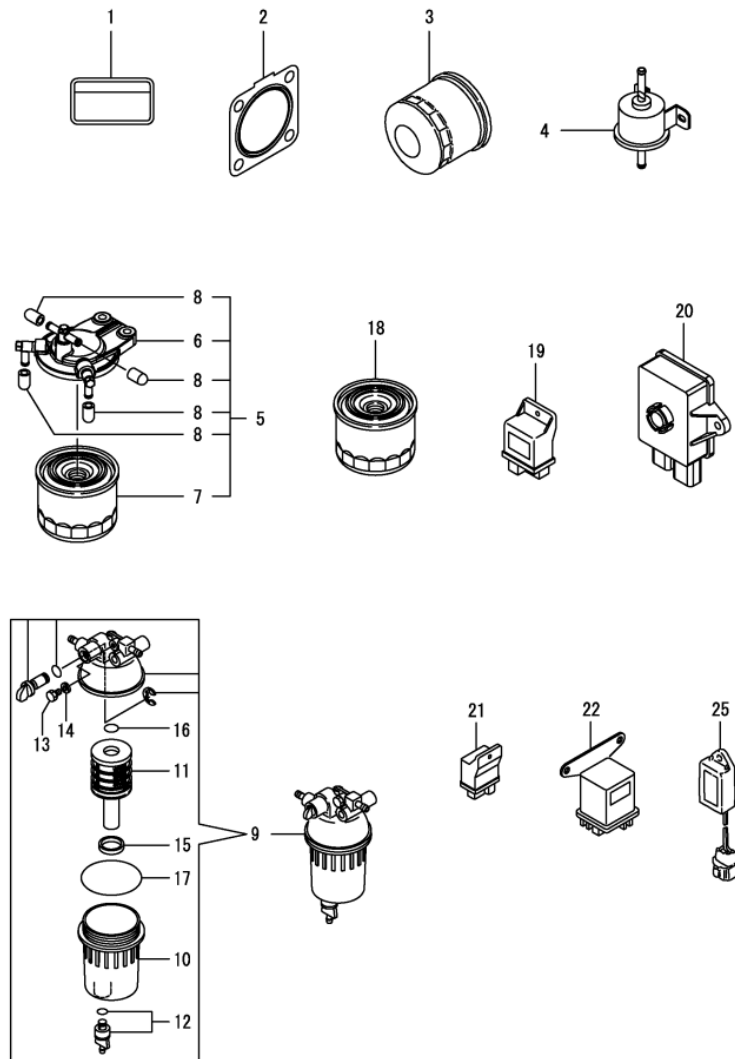
(D)=

(E)=

(F)=

No.	Lev.	Parts No.	Description	Q'ty						I	R
				(A)	(B)	(C)	(D)	(E)	(F)		
1	1	119626-77220	ALTERNATOR, 12V-55A	1							
2	2	X9490561001	NUT	1							
3	2	129052-77380	ROTOR ASSY	1							
4	3	123501-79240	BEARING, BALL	1							
5	3	119620-79250	COVER, BEARING	1							
6	2	129052-77422	FRAME ASSY	1							
7	3	119620-79200	BEARING, BALL	1							
8	3	119620-79210	PLATE, RETAINER	1							
9	3	119620-79220	SCREW	4							
10	3	119620-79230	STUD	2							
11	2	128401-77440	COVER, END	1							
12	2	119620-77461	PULLEY, GENERATOR	1							
13	2	119620-77471	NUT	1							
14	2	119620-77490	COLLAR	1							
15	2	129423-77720	REGULATOR ASSY	1							
16	2	129052-79260	HOLDER ASSY	1							
17	2	129052-79270	HOLDER ASSY, BRUSH	1							
18	2	119620-79290	SCREW	6							
19	2	119620-79300	SCREW	1							
20	2	119626-77450	COVER, END	1							
21	2	119620-79310	BOLT	3							
22	2	119620-79320	SCREW, WWASHER	2							
23	2	119620-79330	BOLT	2							
24	2	119620-79340	BUSH, INSULATION	1							
25	2	119620-79350	NUT	2							
26	1	26106-100452	BOLT, M10X 45 PLATED	1							
27	1	119717-77330	ADJUSTER, BELT	1							
28	1	119810-77340	BOLT, ADJUSTER L=30	1							
29	1	26106-080202	BOLT, M8X 20 PLATED	1							

2.71.1.16 Accessory 附件



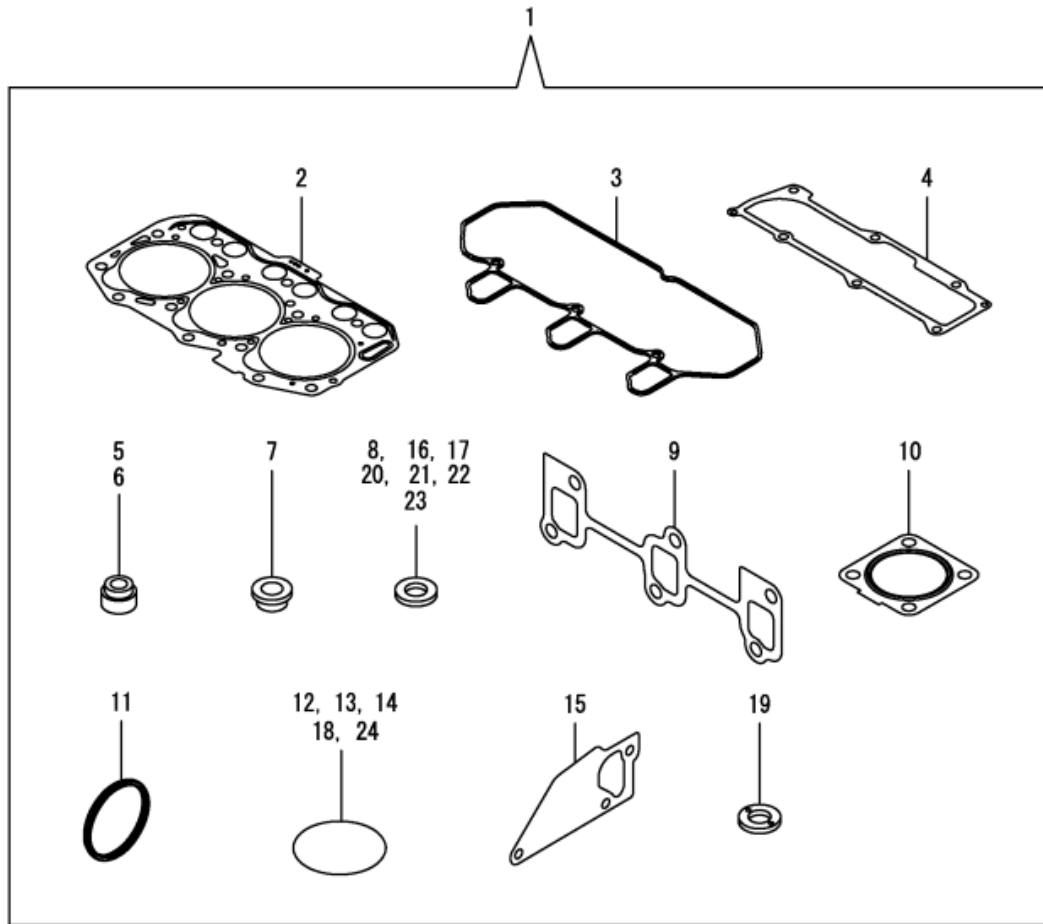
OCD50-M04470 Fig.16

(A)=3TNV80F-SPSY2
(B)=
(C)=

(D)=
(E)=
(F)=

No.	Lev.	Parts No.	Description	Qty						I	R
				(A)	(B)	(C)	(D)	(E)	(F)		
1	1	114110-07761	LABEL, FUEL CAUTION	1							
2	1	119515-13200	GASKET, SILENCER	1							
3	1	119305-35151	FILTER ASSY, D68XL65	1							
4	1	129612-52100	PUMP, FUEL FEED	1							
5	1	119541-55620	FILTER ASSY, FO	1							
6	2	119934-55611	BRACKET, FILTER	1							
7	2	129004-55801	FILTER, FUEL	1							
8	2	129461-59580	CAP, FUEL	4							
9	1	129242-55701	SEPARATOR ASSY,WATER	1							
10	2	129242-55720	CUP, SEPARATOR	1							
11	2	129242-55730	ELEMENT, FUEL FILTER	1							
12	2	129242-55740	PLUG, DRAIN	1							
13	2	129242-55750	VALVE, AIR VENT	1							
14	2	129242-55760	GASKET, PLUG	1							
15	2	129242-55770	FLOAT	1							
16	2	24311-000160	O-RING, 1AP16.0	1							
17	2	24321-000750	O-RING, 1AG75.0	1							
18	1	129004-55801	FILTER, FUEL	1							
19	1	119802-77200	RELAY, SAFETY	1							
20	1	119C10-77600	DRIVER, SOLENOID	1							
21	1	119953-77900	CONTROLLER, QHS	1							
22	1	119650-77911	RELAY ASSY, GLOW	1							
25	1	129211-77920	TIMER, SECTION 1	1							

2.71.1.17 Gasket set 垫片组



OCD50-M04470 Fig.17

(A)=3TNV80F-SPSY2
(B)=
(C)=

(D)=
(E)=
(F)=

No.	Lev.	Parts No.	Description	Q'ty						I	R
				(A)	(B)	(C)	(D)	(E)	(F)		
1	1	719E21-92601	GASKET SET	1							1
2	2	119E10-01330	GASKET SET, HEAD	1							
3	2	119718-11310	GASKET, BONNET	1							
4	2	119717-11331	GASKET, BONNET COVER	1							
5	2	119717-11340	SEAL, VALVE STEM	3							
6	2	119717-11350	SEAL, VALVE STEM	3							
7	2	129901-11450	PROTECTOR, NOZZLE	3							
8	2	119600-11460	GASKET, NOZZLE	6							
9	2	119717-13110	GASKET, MANIFOLD	1							
10	2	119515-13200	GASKET, SILENCER	1							
11	2	119C10-21931	PACKING, WASHER	1							
12	2	119624-32040	O-RING, P12.0	1							
13	2	119717-32050	O-RING, P17.0	2							
14	2	119717-32060	O-RING, P15.0	1							
15	2	119717-42020	GASKET, WATER PUMP	1							
16	2	124465-44950	GASKET, 16	1							
17	2	129150-49360	GASKET, 10	1							
18	2	121850-51960	O-RING, FUEL PUMP	1							
19	2	129901-59560	GASKET, FUEL RETURN	3							
20	2	22190-080002	WASHER, SEAL 8	4							
21	2	22190-120002	WASHER, SEAL 12	4							
22	2	22190-160002	WASHER, SEAL 16	1							
23	2	23414-080000	GASKET, 8X1.0	1							
24	2	24311-000320	O-RING, 1AP32.0	2							

2.71.5 Main pump 主泵总成

序号 ITEM	零件号 PART NO.	Part Name	零件名称	数量 Q'TY	备注 Remark
1	2.43.1	Retaining ring	孔用弹性挡圈	1	
2	2.43.2	CFW sealing ring	CFW 密封圈	1	
3	2.43.3	External hard tube components	外接硬管组件	1	
4	2.43.4	Screw plug (with sealing ring)	螺塞 (带密封圈)	2	M18x1.5
5	2.43.5	Housing	壳体	1	
6	2.43.6	Tapered Roller Bearings	圆锥滚子轴承	2	
7	2.43.7	Transmission shaft	传动轴	1	
8	2.43.8	Large piston sleeve	大活塞套	1	
9	2.43.9	Positioning piston	定位活塞	1	
10	2.43.10	Pipe joint	管接头	2	G1/8-M14
11	2.43.11	Hexagon socket screws	内六角圆柱头螺钉	4	M6x30
12	2.43.12	Flow control valve	流量控制阀	1	
13	2.43.13	O-ring	O 型圈	3	7.65x1.78
15	2.43.15	Maximum flow limit screw	最大流量限位螺钉	1	
16	2.43.16	Internal wire plug	螺帽 M10	2	
17	2.43.17	Nut	螺母 M10	2	
18	2.43.18	Minimum flow limit screw	最小流量限位螺钉	1	
19	2.43.19	End cover	后盖	1	
20	2.43.20	O-ring	O 型圈	4	12x1.9
21	2.43.21	O-ring	O 型圈	1	150x2
22	2.43.22	Reset piston	复位活塞	1	
23	2.43.23	Return spring	复位弹簧	1	
24	2.43.24	Piston rod	活塞杆	1	
25	2.43.25	O-ring	O 型圈	1	31.47x1.78
26	2.43.26	LR control valve assembly	LR 控制阀组件	1	
27	2.43.27	Hexagon socket head screws	内六角圆柱头螺钉	2	M5x25
28	2.43.28	Bearing shell	轴瓦	2	
29	2.43.29	Swash plate	斜盘	1	
30	2.43.30	Variable plunger-sliding shoe ASSY	变量柱塞-滑靴组件	2	
31	2.43.31	Retainer-Slipper	回程盘	1	
32	2.43.32	Piston assembly	柱塞-滑靴组件	9	
33	2.43.33	Port plate	配油盘	1	
34	2.43.34	Tapered Roller Bearings	圆锥滚子轴承	1	
35	2.43.35	Bearing washers	轴承垫圈	1	
36	2.43.36	Main spring washer	主弹簧垫圈	2	
37	2.43.37	Pressure spring	主弹簧	1	
38	2.43.38	Spring plug	弹簧压杆	3	

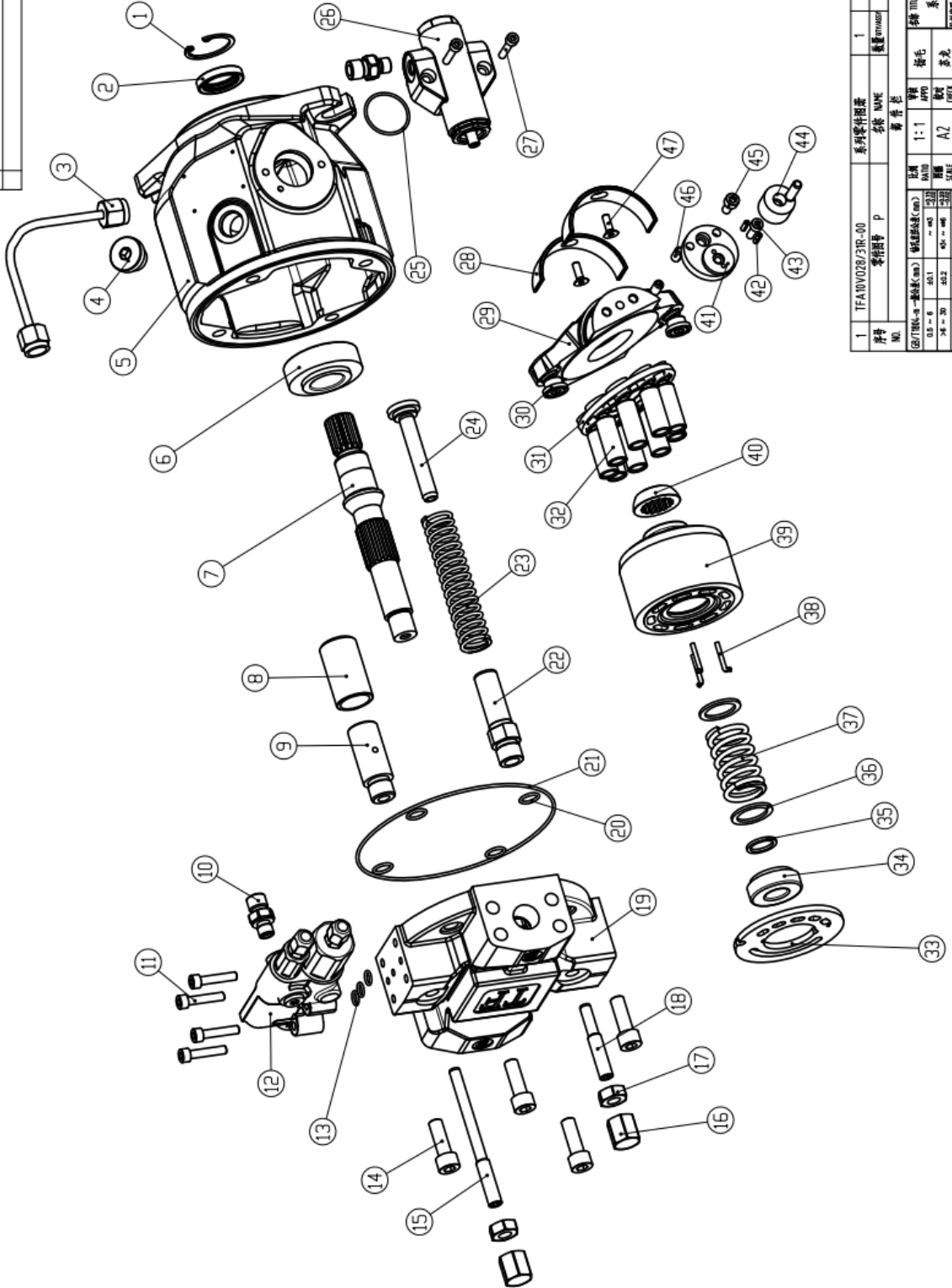
2.71.5 Main pump 主泵总成

序号 ITEM	零件号 PART NO.	Part Name	零件名称	数量 Q'TY	备注 Remark
39	2.43.39	Cylinder block	缸体	1	
40	2.43.40	Spherical hinge	球铰	1	
41	2.43.41	Eccentric wheel	偏心轮	1	
42	2.43.42	Flexible cylinder head screws	弹性圆柱头螺钉	2	
43	2.43.43	Hexagon socket screws	内六角圆柱头螺钉	1	
44	2.43.44	Shift fork	拨叉	1	
45	2.43.45	Hexagon socket screws	内六角圆柱头螺钉	1	
46	2.43.46	Flexible cylinder head screws	弹性圆柱销直槽螺钉	2	
47	2.43.47	Hexagon countersunk head screws	内六角沉头螺钉	2	

--	--	--	--	--

2.71.5 Main pump 主泵总成

REVISONS		修改/变更		日期
NO.	DESCRIPTION	NO.	DATE	

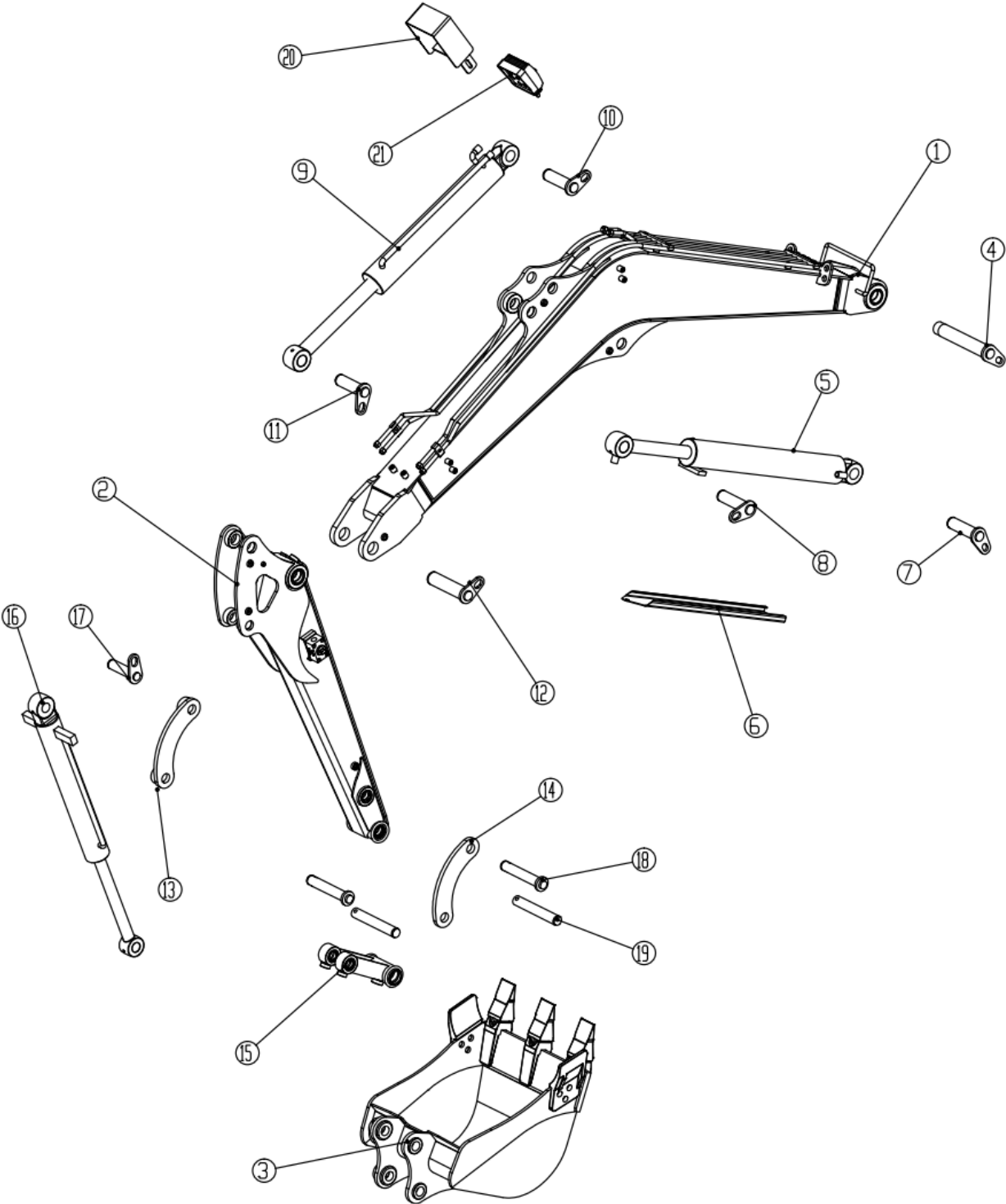


序号	原图	系列零件图号	名称	NAME	数量	材料	MATERIAL	规格	SPEC
1		TFA10V028/31R-00	零件图号 P	零件图号	1				
备注									
比例			系列零件图号						
图/T图A/B	→	零件图	图/T图A/B		零件图				
比例	1:1		图/T图A/B	→	零件图	零件图			
APP	APP	1:1	图/T图A/B	→	零件图	零件图			
SCALE	A2		图/T图A/B	→	零件图	零件图			
DEC	DEC		图/T图A/B	→	零件图	零件图			
UNIT	kg		图/T图A/B	→	零件图	零件图			
UNIT	mm		图/T图A/B	→	零件图	零件图			
UNIT	mm		图/T图A/B	→	零件图	零件图			
UNIT	mm		图/T图A/B	→	零件图	零件图			
UNIT	mm		图/T图A/B	→	零件图	零件图			
UNIT	mm		图/T图A/B	→	零件图	零件图			
UNIT	mm		图/T图A/B	→	零件图	零件图			
UNIT	mm		图/T图A/B	→	零件图	零件图			
UNIT	mm		图/T图A/B	→	零件图	零件图			
UNIT	mm		图/T图A/B	→	零件图	零件图			

3.0 FRONT ASSY 前部装置

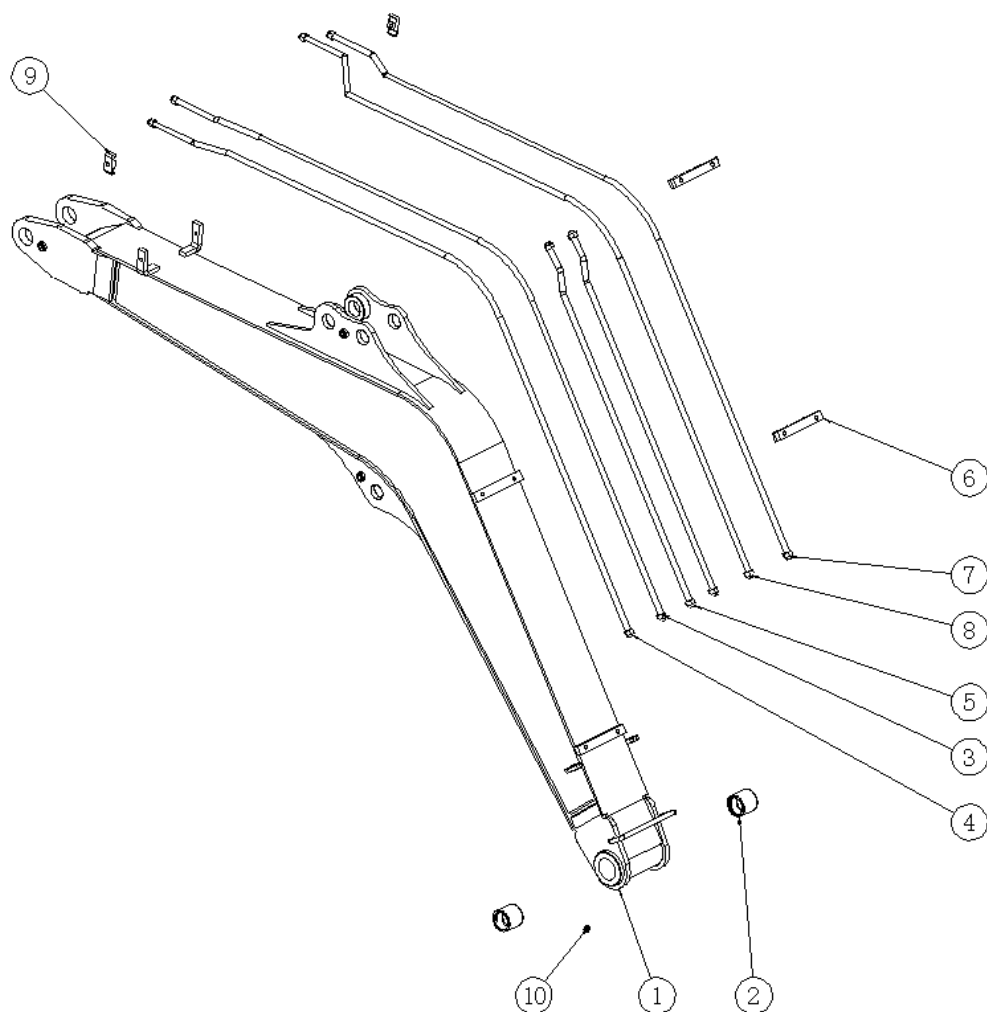
序号 ITEM	零件号 PART NO.	Part Name	零件名称	数量 Q'TY	备注 Remark
1	3.1	Boom ASSY	动臂总成	1	
2	3.2	Arm ASSY	斗杆总成	1	
3	3.3	Bucket	铲斗	1	
4	3.4	Boom rear shaft	动臂后轴	1	
5	3.5	Boom cylinder	动臂缸	1	
6	3.6	Boom cylinder protector	动臂缸护罩	1	
7	3.7	Boom cylinder rear shaft	动臂缸后轴	1	
8	3.8	Boom cylinder front shaft	动臂缸前轴	1	
9	3.9	Arm cylinder	斗杆缸	1	
10	3.10	Arm cylinder rear shaft	斗杆缸后轴	1	
11	3.11	Arm cylinder front shaft	斗杆缸前轴	1	
12	3.12	Shaft	动臂-斗杆连接轴	1	
13	3.13	Rocker-Lh	连杆焊合	1	
14	3.14	Rocker-Rh	连杆板	1	
15	3.15	Pushing rod ASSY	推杆总成	1	
16	3.16	Bucket cylinder	铲斗缸	1	
17	3.17	Bucket cylinder rear shaft	铲斗缸后轴	1	
18	3.18	Shaft for rocker	连杆轴	2	
19	3.19	Shaft for bucket	铲斗轴	2	
20	3.20	Headlight stand	灯罩	1	
21	3.21	Headlight	大灯	1	

3.0 FRONT ASSY 前部装置



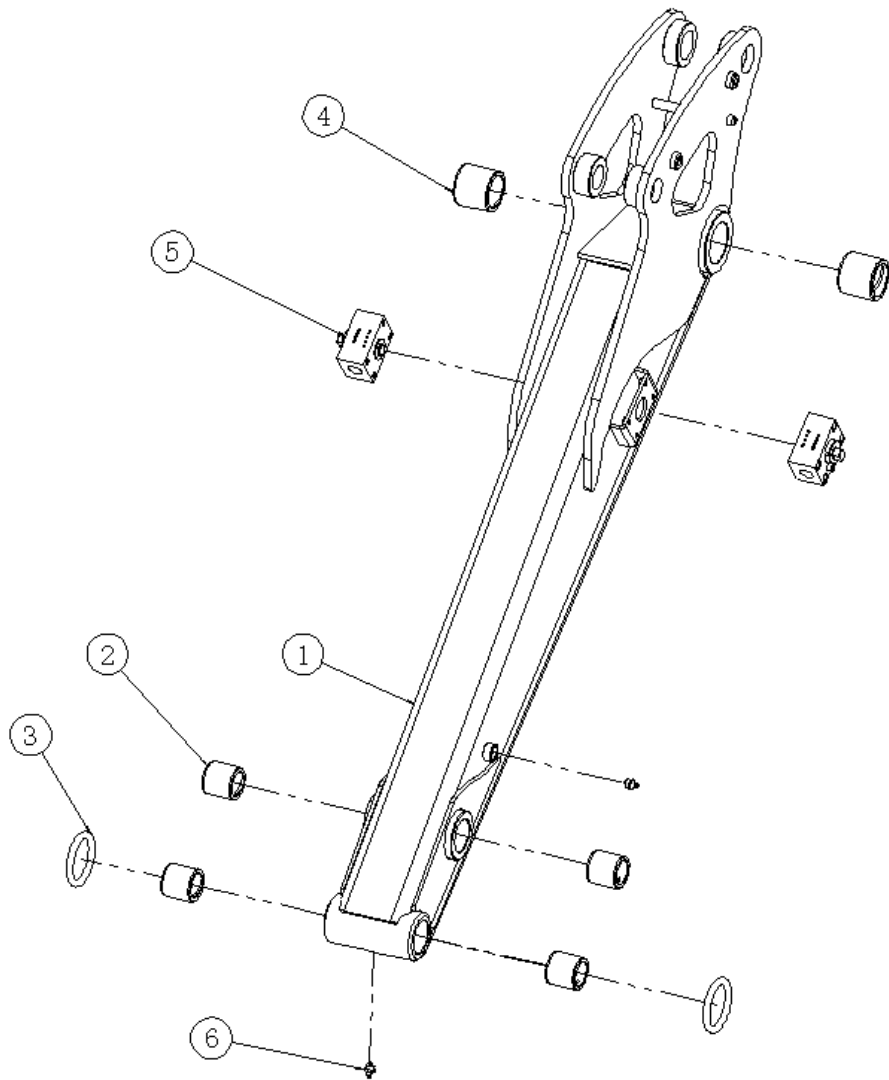
3.1 Boom ASSY 动臂总成

序号 ITEM	零件号 PART NO.	Part Name	零件名称	数量 Q'TY	备注 Remark
1	3.1.1	Boom	动臂焊合	1	
2	3.1.2	bushings	动臂衬套	2	
3	3.1.3	Hydraulic oil pipe A	钢管总成 A	1	
4	3.1.4	Hydraulic oil pipe B	钢管总成 B	1	
5	3.1.5	Hydraulic oil pipe C	钢管总成 C	2	
6	3.1.6	Hydraulic oil pipe clamp A	钢管管卡 A	2	
7	3.1.7	Hydraulic oil pipe B	镜像钢管总成 B	1	
8	3.1.8	Hydraulic oil pipe A	镜像钢管总成 A	1	
9	3.1.9	Hydraulic oil pipe clamp	钢管管卡 C	2	
10	3.1.10	Oil cup M10X1	油杯 M10X1	1	



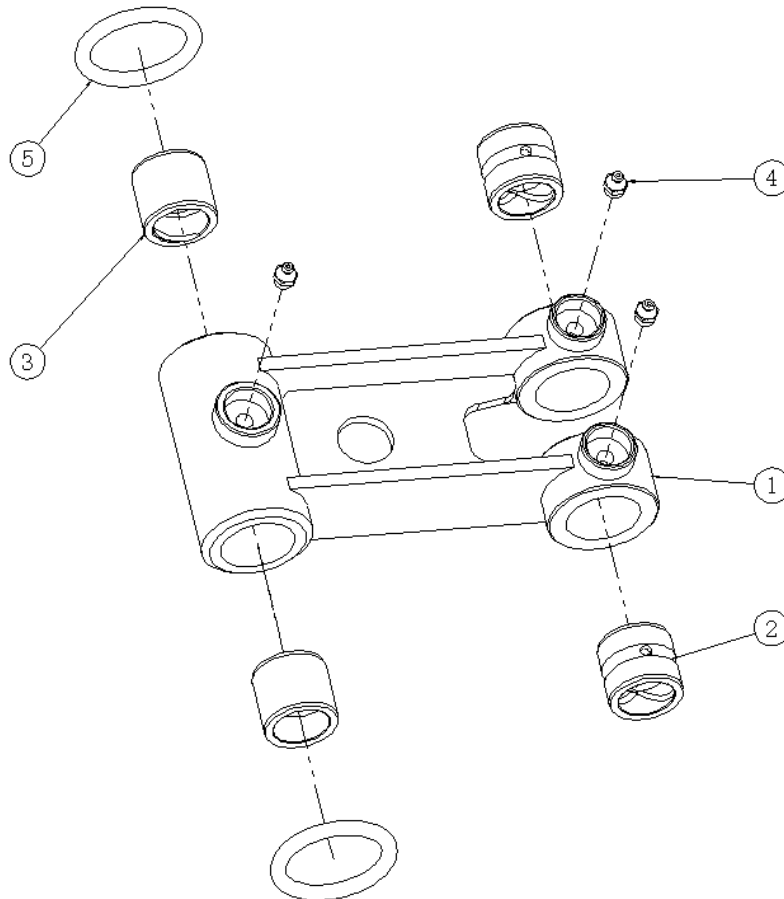
3.2 Bucket arm ASSY 斗杆总成

序号 ITEM	零件号 PART NO.	Part Name	零件名称	数量 Q'TY	备注 Remark
1	3.2.1	Arm	斗杆焊接	1	
2	3.2.2	Front bushings	斗杆前衬套	4	
3	3.2.3	O-ring	O 型圈	2	
4	3.2.4	Rear bushings	斗杆后衬套	2	
5	3.2.5	Shut-off valve	转阀	2	
6	3.2.6	Oil cup M10X1	油杯 M10X1	2	



3.15 Pushing rod ASSY 推杆总成

序号 ITEM	零件 PART NO.	Part Name	零件名称	数量 Q'TY	备注 Remark
1	3.15.1	Pushing rod	推杆	1	
2	3.15.2	Bushings -01	推杆钢套-01	2	
3	3.15.3	Bushings-02	推杆钢套-02	2	
4	3.15.4	Oil cup M10 x 1	油杯 M10x1	3	
5	3.15.5	O-ring	O 型圈	2	



PARTS BOOK

XN 28

山东肯石重工机械有限公司

SHANDONG KEN STONE HEAVY MACHINERY CO.,LTD

地 址：山东省聊城市冠县定远寨镇 309 国道南侧

热线电话：0635-8362550

邮 编：252512

网 址：www.rhinoexcavator.com

Address : South of national highway 309, dingyuanzhai Town ,
Guan County ,Liaocheng city,Shandong Province,China

Hotline : 0635-8362550

Postal :252512

Website : www.rhinoexcavator.com